

VRX & VR12
GRAINVAC



AGI GrainVacs

VRX & VR12

All aspects of AGI GrainVacs are examined, questioned and extreme tested individually and as part of the whole system, not just in controlled environments, but in the field as well. By utilizing VR Technology, AGI is able to get more capacity and longevity while reducing noise, debris and maintenance time. AGI GrainVacs set all new standards in efficiency, speed and durability.

Signature Body

Specifically designed to minimize impact and maximize the auger feed - the drive shaft is mounted on the outside where you can get at it. Our GrainVacs feature leak-proof cleanout doors with the ability to fully open without tools. It's all about speed and efficiency.

Chrome Augers

AGI GrainVacs use ¼" -thick, spring-loaded chrome flighting, allowing it to "float" on the bearings. This ensures correct line-up every time you fold the augers up and down.

The Air System

Our air system is designed for speed, efficiency and longevity. At a sound volume quieter than the tractor, three critical components work together producing high-pressure suction to pull grain into the machine: the fan, the air throttle and the air lock.

The Fan

Lasts 25% longer than previous models. This means approximately 80 more hours of working time for the average user (based on extensive testing).

The Air Throttle

Automatically manages suction according to how much grain is flowing into the system. This allows the user to adjust the amount of grain going through. Suction can be manually adjusted to suit the situation.

The Air Lock

Spring-loaded, two flap air lock designed to be pushed as far as needed for the grain to exit the GrainVac fast.



GRAINVAC VRX & VR12 SPECIFICATIONS

	VRX PTO DRIVE	VR12 PTO DRIVE
CAPACITY	up to 6,000 BPH	up to 10,000 BPH
WEIGHT	2950 lbs (1338 kg)	3300 lbs (1497 kg)
HITCH WEIGHT	432 lbs (196 kg)	600 lbs (272 kg)
AUGER DISCHARGE HEIGHT	14' (4.3m)	14' (4.3 m)
HYDRAULIC REQUIREMENTS	2100 PSI @ 2 GPM	2100 PSI @ 2 GPM
TRACTOR HP REQUIREMENT	85 HP	130 HP
TRANSPORT WIDTH	8' 2" (2.44 m)	8' 2" (2.5 m)
TRANSPORT HEIGHT (WITHOUT EXHAUST)	8' 2" (2.48 m)	9' 6" (2.9 m)
TRANSPORT LENGTH	9' 10" (3 m)	11' (3.4 m)



VRX

The VRX sets the standard in grain vac technology and has capacity up to 6,000 BPH. The VRX sports 45-feet of 7-inch diameter hose. Combined with the telescoping inlet and the standing floor sweep, the VRX cleans up grain within a 49-foot radius from the base of the machine.

The Standard Hose Package Includes:

- One Bin Load-out Nozzle, 3' long
- One Standing Floor Sweep with Handles, 4' long
- One Clean-up Nozzle with Wheels
- Two Flexible Stainless Steel Hose, 7' long each
- One Flexible Stainless Steel Hose, 3' long
- Two Aluminum Pipes, 7 ½' long each
- One Aluminum Pipe, 5' long
- One Basketweave Hose, 7 ½' long



VR12

The VR12 reaches up to 10,000 BPH with only 130 HP and ensures that your toughest jobs are taken care of fast. The VR12 has 48-feet of 8-inch diameter hose. Combined with the telescoping inlet and the standing floor sweep, the VR12 cleans up grain within a 52-foot radius from the base of the machine.

The Standard Hose Package Includes:

- 10" Diameter Telescoping Inlet, 5' long
- One Bin Load-Out Nozzle, 3' long
- One Standing Floor Sweep with Handles, 4' long
- One Clean-up Nozzle with Wheels
- One Stainless Steel Flex Hose, 3' long
- Four Flexible Stainless Steel Hose, 4' long each
- Two Aluminum Pipes, 7 ½' long each
- One Aluminum Pipe, 5' long
- One Basketweave Hose, 7 ½' long
- Three Hose Caddys

Dust Collector

Don't let a little dust get in the way of moving grain when and wherever you need. Our Dust Collectors are easy to attach and give you flexibility to collect or direct the debris. The AGI Dust Collector keeps dust where it should be – away from you!

DUST COLLECTOR FOR VRX	PART #	45-113094
DUST COLLECTOR INSTALLED ONTO VRX FROM FACTORY	PART #	45-113199
DUST COLLECTOR FOR VR12	PART #	45-113266
DUST COLLECTOR INSTALLED ONTO VR12 FROM FACTORY	PART #	45-113267



Hoses & Accessories

Our GrainVacs come equipped with more standard hose than any other. Together with the telescoping inlet and the standing floor sweep, the standard package cleans up grain within a 49' radius from the base of the machine with the VRX and 52' radius with the VR12. When you need to reach beyond that distance, you need options that suit your set-up. To achieve best capacity at any distance, cover as much as you can with straight or smooth pieces like aluminum pipes and elbows, then add flexible portions like the stainless steel flex hoses and the Bendahose where needed.

ALUMINUM PIPE

Aluminum pipe is the best option for moving grain over any distance. Aluminum pipe provides the least resistance and allows your system to maintain optimum performance.



7" X 4½' WITH ENDS	PART #	38-105259
7" X 7½' WITH ENDS	PART #	38-105260
7" X 10' WITH ENDS	PART #	38-104312
8" X 5' WITH ENDS	PART #	55-111081
8" X 8' WITH ENDS	PART #	55-111079
8" X 10' WITH ENDS	PART #	38-110657

FLEX PIPE

Stainless Steel Flex hoses provide some flexibility while keeping your capacity high.



6" X 6' STEEL WITH ENDS	PART #	20-101442
6" X 6' STEEL WITHOUT ENDS	PART #	P3422-06-0001
7" X 2½' STAINLESS STEEL WITHOUT ENDS	PART #	P3422-07-0002
7" X 6' 9" STAINLESS STEEL WITHOUT ENDS	PART #	P3422-07-0001
7" X 3' STAINLESS STEEL WITH ENDS	PART #	38-105143
7" X 7' STAINLESS STEEL WITH ENDS	PART #	38-104112
8" X 2½' STAINLESS STEEL WITH ENDS	PART #	38-111569
8" X 4' STAINLESS STEEL WITH ENDS	PART #	45-113184
8" X 6' 8" STAINLESS STEEL WITHOUT ENDS	PART #	P3422-08-0002
8" X 7' STAINLESS STEEL WITH ENDS	PART #	38-110535
10" X 3' 4" STAINLESS STEEL WITH ENDS	PART #	45-113282

BENDAHOSE

The Bendahose is specifically designed to give you that extra little reach you always wanted along with flexibility.



7" X 4' BENDAHOSE	PART #	38-112190
8" X 4' BENDAHOSE	PART #	55-112193

BASKETWEAVES

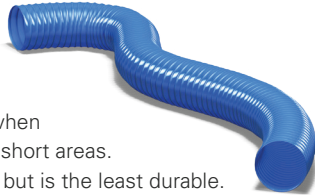
Basketweaves are your most durable clean-up hose, with a little more weight and less flexibility than the durathane options.



6" X 12½' BASKETWEAVE HOSE WITHOUT ENDS	PART #	P3420-06-0150
7" X 12½' BASKETWEAVE HOSE WITHOUT ENDS	PART #	P3420-07-0018
7" X 7' BASKETWEAVE HOSE WITHOUT ENDS	PART #	P3420-07-0039
7" X 8' BASKETWEAVE HOSE WITH ENDS	PART #	45-113081
8" X 7' BASKETWEAVE HOSE WITHOUT ENDS	PART #	P3420-08-0080
8" X 8' BASKETWEAVE HOSE WITH ENDS	PART #	38-111393

DURATHANE HOSE

Durathane hose is the best option when maximum flexibility is required over short areas. Durathane offers the most flexibility but is the least durable.



6" X 12' DURATHANE HOSE WITHOUT ENDS PART # **P3420-06-0012**

7" X 8' DURATHANE HOSE WITHOUT ENDS PART # **P38-112180**

7" X 12½' DURATHANE HOSE WITHOUT ENDS PART # **P38-112179**

7" X 25' DURATHANE HOSE WITHOUT ENDS PART # **P3420-07-0042**

HOSE COVER (BLACK)
PART # **P3420-07-0045** (sold per foot)

If you love to use that lightweight hose but want it to last longer, wrap it in this nylon cover. Use 8 tighteners (6190-00-0128) to fasten or use hose caddy's to hold the hose up off the floor. See hose caddy's on the next page.



ELBOWS

Steel elbows get you around corners without compromising your soft hoses, allowing material to flow as smoothly and quickly as possible. Use them with hoses to extend handling reach or to redirect the exhaust.

8" 45° ELBOW KIT
PART # **55-112771**



7" 45° ELBOW KIT
PART # **38-107211**

8" 45° EXHAUST ELBOW
PART # **55-111121**

8" 90° ELBOW KIT
PART # **55-112729**



8" 90° EXHAUST ELBOW
PART # **55-111206**

7" 90° ELBOW KIT
PART # **38-107210**

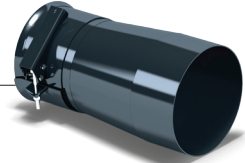


8" X 11" EXHAUST ADAPTER
PART # **55-111207**

TRANSITIONS

Don't be limited by your hose diameter. Transitions available in 4, 6, 7 and 8 inch sizes.

4" MALE TO 7" MALE
PART # **38-107498**



6" MALE TO 7" FEMALE
PART # **38-104690**

7" MALE TO 8" FEMALE
PART # **38-107474**

7" MALE TO 6" FEMALE
PART # **38-103897**

8" MALE TO 7" FEMALE
PART # **38-110650**

VR12 CLEAN-UP TRANSITION
PART # **45-113247**



HOSE ENDS

6" MALE HOSE END
PART # ****20-101286**

7" MALE HOSE END
PART # ****38-103856**

8" MALE HOSE END
PART # ***38-110537**

7" FEMALE HOSE END FOR ALUMINUM PIPE ONLY
PART # **P5195-01-7003**

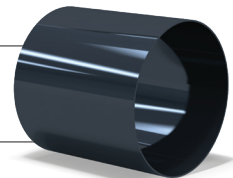
8" FEMALE HOSE END FOR ALUMINUM PIPE ONLY
PART # **P55-112660**

6" FEMALE HOSE END
PART # ****20-101427**

7" FEMALE HOSE END
PART # ****38-111291**

8" FEMALE HOSE END
PART # ***55-112581**

* Requires 8" Hose Tightener (P6190-00-0128)
** Requires 6" & 7" Hose Tightener** (P6190-00-0104)



Nozzles & Sweeps

NOZZLES

7" CLEAN-UP NOZZLE WITH WHEELS
PART # **38-108401**



7" ALUMINUM BIN LOAD-OUT NOZZLE
PART # **38-108923**

8" ALUMINUM BIN LOAD-OUT NOZZLE
PART # **55-111828**

Use the bin load-out nozzle when you want to get maximum efficiency when loading out of a full bin.



SWEEPS

Use the floor sweep to clean up the bin floor in one magical swoop. This nozzle allows you to get maximum efficiency when cleaning the bottom of a bin.

6" FLOOR SWEEP
PART # **38-111044**

7" FLOOR SWEEP OPTIMIZER
PART # **38-112491**

7" FLOOR SWEEP
PART # **38-108959**

8" FLOOR SWEEP OPTIMIZER
PART # **38-112494**

8" FLOOR SWEEP
PART # **38-110676**

FLOOR SWEEP HANDLES KIT
PART # **38-110798**



**Shown with optional handles

CLAMPS

Clamps work best when sitting on top - not dragging beneath the hoses.

8" PULL RING/CLAMP
PART # **P2391-00-0002**



8" CLAMP RUBBER SEAL
PART # **P2391-00-0004**

8" HOSE TIGHTENER
PART # **P6190-00-0128**

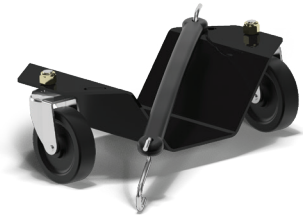
6" & 7" HOSE TIGHTENER
PART # **P6190-00-0104**



MISCELLANEOUS

HOSE CADDY
PART # **38-112204**

Dragging your hoses across a floor can be a heavy chore in some cases. Simply attach the hose caddy to the bottom of your hose and it will glide effortlessly across the floor.



14" DISCHARGE SPOUT
PART # **P22A175**

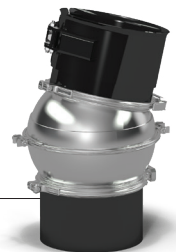
7" - 3' TO 6' COLLAPSIBLE TUBES
PART # **38-104966**

8" - 4' TO 6' COLLAPSIBLE TUBE
PART # **55-111876**

Specialties

8" ROTATING BALL JOINT
PART # **55-112194**

Add a ball joint wherever it makes sense and move around more freely with 40° of rotation.

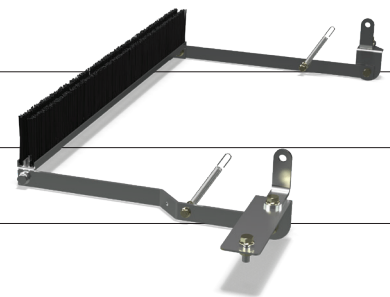


DRUM BRUSH KIT FOR VR12
PART # **45-113221**

DRUM BRUSH KIT FOR VRX
PART # **45-112996**

DRUM BRUSH KIT FOR 3700
PART # **55-111222**

DRUM BRUSH KIT FOR 552-2700
PART # **38-104551**



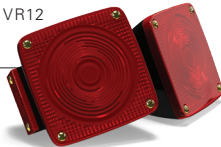
7" BEND-A-SPIN
PART # **38-113030**

The Bend-A-Spin is a handy little combo that sets up the rest of your hoses to rotate in both directions.



8" BEND-A-SPIN
PART # **45-113174**

TRANSPORT LIGHT KIT FOR VRX AND VR12
PART # **45-113093**



AIR THROTTLE KIT
PART # **38-112798**

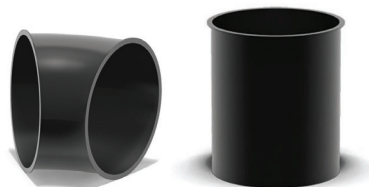
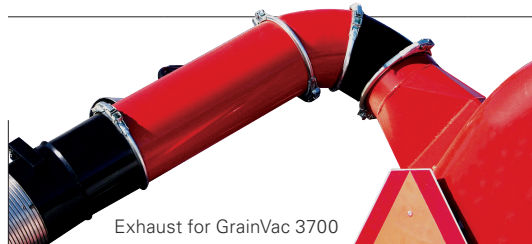
The air throttle kit can be added to any 2700 model machines. Reduces horsepower requirement and improves grain flow when moving lighter grains.



EXHAUST HOSE KIT

If you are looking to blow your dust along the ground instead of up into the air, the exhaust hose kits are for you. You can direct the dust in between the bins, keeping it low to the ground and away from you. For the optimal angle to redirect exhaust away from your GrainVac, order:

PARTS	VRX VR12	2700	3700
8" 45° EXHAUST ELBOW PART # 55-111121	Two (2)	One (1)	
8" CLAMP RUBBER SEAL PART # P2391-00-0004	Three (3)	Two (2)	
8" PULL RING/CLAMP PART # P2391-00-0002	Three (3)	Two (2)	
8" X 11" EXHAUST ADAPTER PART # 55-111207	One (1)	One (1)	



Get the best out of your GrainVac

Short

Position the GrainVac as close to the source of the material as possible. Keep the length of piping short. The shorter the distance, the less piping friction and the greater the GrainVac capacity.

Smooth

Smooth pipes (interior walls) reduce resistance to air and grain movement. Where possible, use aluminum pipes first, then stainless steel flex pipes. Last of all use soft hose (for clean up only) as this convenient lightweight hose creates more friction.

Straight

A ninety degree bend in the piping is the equivalent of adding twenty feet or more of straight piping. Reduce bends in the piping as much as possible, and keep the grain moving straight.

Slope

Lay out the piping as straight as possible over the length of run. "Hills and Valleys" in piping creates resistance to material flow. Grain does not move uphill easily, so remember to minimize the slopes.

Seal

Air leaks in the GrainVac reduce capacity at the nozzle end of the pipe. Keep all neoprene foam seals (on the auger flanges, body doors and ports) in good condition. Keep the auger clean-out door and hose clamps adjusted snug in order to ensure a good air seal.

Suction

Grain moves only when air moves (no flow, no go). For older models you may be required to retract the hose end or nozzle slightly from the grain pile, meter the grain into the nozzle, or pull the nozzle air slide open to ensure no loss of suction. If your vac is equipped with an air throttle, know how to use it to adapt to your grain handling situation.

Speed

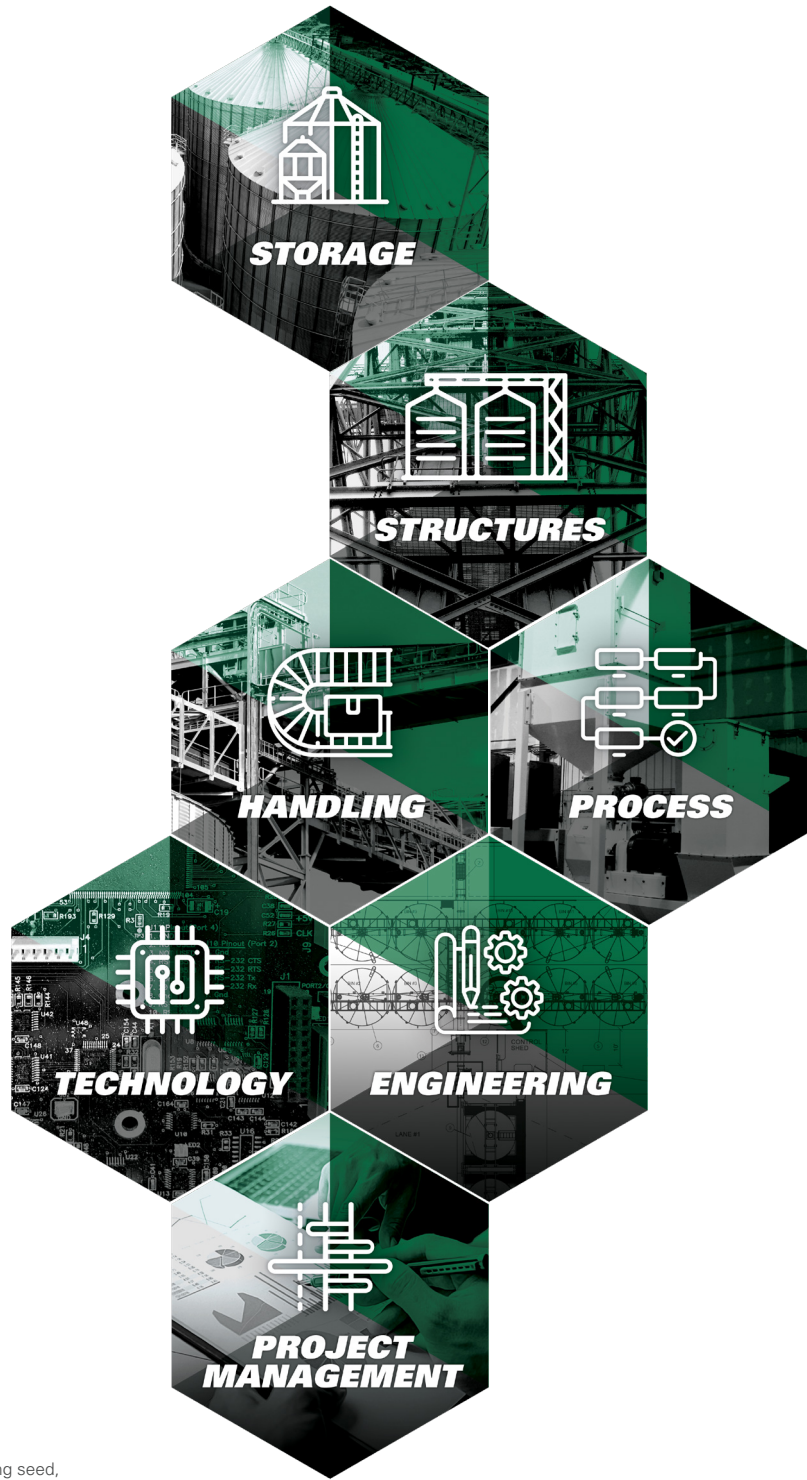
AGI GrainVacs are designed to run at top capacity when the PTO is at maximum speed of 1000 rpm. Using our standard tachometer/hour meter, you will always know your GrainVac speed.

Sweep

Don't work so hard. Once you are in the bin use the light aluminum floor sweep. First, draw down the large piles. Then, in a pattern of semicircular "sweeps" across the floor, add hose lengths as required to increase your sweeping diameter. With the AGI GrainVac you will make every job a clean sweep.

Sparkle

To ensure good airflow keep the blower blades, inlet, exhaust piping, flighting and drum screen clean and free of buildup. Remove debris and perform maintenance as described in your operator's manual.



AGI is a leading provider of equipment solutions for agriculture bulk commodities including seed, fertilizer, grain, and feed systems with a growing platform in providing equipment and solutions for food processing facilities. AGI has manufacturing facilities in Canada, the United States, the United Kingdom, Brazil, India and Italy and distributes its products globally.



Box 1750, Swift Current Saskatchewan, Canada S9H 4J8
 1.855.432.1990 | aggrowth.com/grain-vacs

AGGROWTH.COM [aggrowthintl](#) [▶](#) [▶](#) [▶](#) [▶](#) [▶](#) [▶](#)