



MASSEY FERGUSON



MF 8S SERIES

205-305 HP

A NEW ERA FOR
STRAIGHTFORWARD
AND DEPENDABLE TRACTORS

MF 8S SERIES A NEW ERA

FOR STRAIGHTFORWARD, DEPENDABLE TRACTORS

Much more than just a tractor, the Massey Ferguson® 8S Series provides an enhanced operator experience. It encompasses the style of tomorrow and the uniqueness of Massey Ferguson.

The exciting new MF 8S Series begins a new era for Massey Ferguson. It is designed to be a complete farming solution, offering you a better overall experience while giving you more benefits from connectivity and precision ag technology.

We began the MF 8S Series project with a blank page. At the heart of it was the global "Voice of the Customer" study: an in-depth, one-on-one interview with operators in several countries across the globe.

Key feedback from you, the customer, underlined the need for comfort, ease of use, value for money, excellent reliability, intuitive and convenient controls, efficiency transmitting maximum power to the ground, 100% connectivity, and the ability to work with the most demanding implements.

We took that feedback and created a tractor tailored to your needs and developed to keep you operating at your best while maximizing your efficiency.

Better performance. Better connectivity. Better comfort. More ease of use. Plus a low cost of operation and an optimal return on your investment. That's what the new era of the MF 8S Series has to offer.



MADE BY DESIGN
EXCLUSIVE MF PROTECT-U CONCEPT

03



MADE FOR PRODUCTIVITY

13



MADE FOR PRECISION AG & CONNECTIVITY

23



07

MADE FOR COMFORT
A NEW ERA OF CAB ENVIRONMENT

15

MADE FOR PERFORMANCE
ENGINE POWER EFFICIENCY



17

MADE FOR CONTROL



- Made by Design – Exclusive MF Protect-U Concept 3
- Your MF 8S Series at a Glance 5
- Made for Comfort – A New Era of Cab Environment..... 7
- Made for Productivity – The Deluxe Version 13
- Made for Performance – Engine Power Efficiency 15
- Made for Control 17
- Made for Precision Ag & Connectivity 23

MADE BY DESIGN

EXCLUSIVE MF PROTECT-U DESIGN —
ENGINE AND CAB INSTALLATION DESIGN
PROVIDES VISIBILITY, COMFORT, EFFICIENCY
AND ULTIMATE PERFORMANCE

The beauty of the MF Protect-U design, with a 9.4-inch (24 cm) gap between the engine and the cab, is what makes this tractor so unique. It protects you while giving you ultimate front visibility and comfort. Having the engine fully encapsulated and isolated from the cab also reduces noise and vibration, making it one of the quietest cabs on the market. It also contributes to heat insulation for the cab while improving engine cooling capacity and efficiency, maximizing uptime. The cab, together with the narrow profile hood and the inclined windshield bending toward the front, offers ultimate visibility, space and comfort.

THE PROTECT-U DESIGN

The encapsulated engine is always getting fresh air, which contributes to better engine performance through improved cooling capacities.

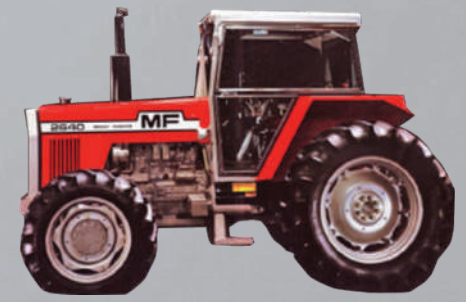


“The style of tomorrow.
The uniqueness of
Massey Ferguson.”



OUR PAST FUELS OUR **FUTURE**

The new MF 8S Series combines radical design with a practical purpose. The striking “neo-retro” design pays tribute to the brand’s legacy, illustrated by a new interpretation of the iconic MF gray saber stripe on the side and horsehead collar motif on the hood, which dates back to the MF 100 and MF 2000 Series.



OUR CLASSIC DESIGN ...



... REFRESHED FOR TODAY AND BEYOND

The next level for space, comfort, ergonomics and connectivity

- ▶ The quietest cab on the market, with a noise level of only 68 dB. It also offers 360° visibility.
- ▶ Cab and front axle suspension improves driving comfort while the new MF vDisplay digital dashboard provides all needed information at a glance. The new armrest offers best-in-class control of all the tractor's operations.

YOUR MF 8S SERIES AT A GLANCE

The MF 8S Series is a tractor ahead of its time. It outperforms on comfort, connectivity, ease of use, power efficiency, output, low cost of operation and top reliability for fully maximized uptime and the best return on your investment.

Low cost of operation

- ▶ Engine efficiency – max power and torque at low engine revs cut fuel consumption by 10% and reduces noise level
- ▶ Automatic valve clearance setting
- ▶ Easy access to daily maintenance
- ▶ AGCO GenuineCare maintenance and service contracts

WITH SIX MODELS TO CHOOSE FROM, THIS IS ONE OF THE BEST CHOICES THAT YOU WILL MAKE.

| | MF 8S.205 | MF 8S.225 | MF 8S.245 | MF 8S.265 | MF 8S.285 | 8S.305 |
|------------------------------|-------------------------------------|-----------|-----------|-----------|-----------|--------|
| Engine | AGCO Power™ — All-in-One technology | | | | | |
| Engine capacity | 6 cylinder, 7.4 liter | | | | | |
| Transmission | Dyna-VT | | | | | |
| *Rated engine HP @ 1,950 rpm | 190 | 210 | 230 | 250 | 270 | 290 |
| *Max. engine HP @ 1,850 rpm | 205 | 225 | 245 | 265 | 285 | 305 |
| Rated PTO HP | 150 | 170 | 190 | 205 | 220 | 240 |

*ISO TR 14396

Efficient drivelines bring higher productivity and efficiency

- ▶ Dyna-VT™ stepless transmission offers total operator comfort and optimum fuel efficiency at all times
- ▶ Engine Power Management to deliver more power when it's needed most
- ▶ Perfect engine/transmission combinations provide maximum output and more power efficiency, reducing power loss by up to 26%





Straightforward, smart, sustainable farming technologies. New Datatronic 5 and optional Fieldstar 5 terminal provide the latest user-friendly precision farming package

- ▶ 9-inch touch-screen terminal created to provide a more intuitive and precise farming experience
- ▶ New MF Guide solutions provide economy by reducing overlaps
- ▶ MF Section and Rate Control allows you to adjust the application rate on the go, while automatically minimizing overlap, skips and wasted product
- ▶ MF TaskDoc® creates and sends securely detailed records of jobs to the office and preferred partners through the cloud
- ▶ MF Connect telemetry enables remote and near real-time monitoring and decision making, improving efficiency and maximizing uptime

Ability to work faster with the most demanding implements

Up to five spool valves to the rear and three to the front, including front linkage, and Power Beyond installation, plus a high lift capacity hitch. The hydraulic system offers the ability to work faster with the widest implements while increasing versatility.



MADE FOR
COMFORT



THE MF 8S SERIES CAB

A NEW ERA FOR COMFORT, VISIBILITY AND CONTROL

The Massey Ferguson cab has been renowned for excellence since the earliest days of modern tractor design. With the MF Protect-U design, the MF 8S Series moves that legacy a step forward. We recognize the value of a comfortable cab environment when days get long and hectic, so we worked hard to give you a productive place that blends roominess, comfort, visibility, quiet, ease of use, connectivity and quality.

Why? Because a more productive operator creates better profit for their business.



121.1 ft.³

Of space for you and a passenger



VISIBILITY
71 ft.²
OF GLASS SURFACE

With tilted windshield to provide
increased control and ease of operation



68 dB

The quietest cab on the market today
for reducing stress and fatigue

MADE FOR DETAILS

WHEN IT COMES TO MAKING A DIFFERENCE TO YOUR WORKDAY, THE LITTLE DETAILS MATTER.

THE NEW MF VDISPLAY

The MF 8S Series' easy-to-read digital dashboard can be personalized.



ALWAYS CONNECTED — Two USB ports and adjustable phone and tablet holder available through AGCO Parts.



The optional Bluetooth RDS/MP3 radio allows you to make hands-free calls, listen to your favorite podcast or practice some cab karaoke.

EASY AND SECURE ACCESS

Large, wide door; steps; rails; and tiltable steering column provide best-in-class accessibility to the cab.



POWER CONTROL LEVER

Exclusive and simple, the unique Massey Ferguson Power Control lever provides straightforward three-in-one operation.



YOU CAN:

- shuttle between forward  / reverse 
- shift speeds and ranges: up  and down 
- de-clutch 
- select neutral

LEAVING YOUR RIGHT HAND FREE
TO OPERATE A LOADER OR ANY
IMPLEMENT HYDRAULICS.

MADE FOR COMFORT

SUN SHADE — Up to four sun blinds, along with the tilted front windscreen and the large roof, provide shade for total protection.



FRONT WIPER

With the MF Protect-U cab design, 72% coverage of the windscreen is achieved. Lateral wiper option is also available.



SIDE MIRRORS feature an adjustable top and lower section offering the best view during transport and reducing blind spots. Options include electric de-icing and electronically adjustable mirrors.



The **16 LED LIGHTS OPTION** transforms night into day. This includes comfort light delay at the end of the day with automatic work light shutoff.



CAB SUSPENSION brings extra comfort. Two types available: mechanical and active mechanical.

The **ACTIVE MECHANICAL CAB SUSPENSION** uses silent block bushes and spring-assisted shock absorbers, providing optimum damping forces for all driving situations. It is adjustable, allowing you to set the firmness of ride.

ALWAYS FRESH

EFFICIENT AUTOMATIC AIR CONDITIONING is available and supplied through 14 automotive-style outlets located all around the operator for perfect air distribution ...



... automatic management is available via the Datatronic 5 on the Deluxe models ...



... and controls are easily accessible on the armrest.



Keep your lunch and beverages fresh with the handy cooler located under your passenger seat.



WORK DOESN'T HAVE TO FEEL LIKE A CHORE.

We have several seat options to choose from depending on the model you choose. Each of them provides outstanding comfort.



DELUXE MODELS

Automatic air-suspended swivel seat, heated, with lateral damping



OPTIONAL ON DELUXE MODELS

Semi-leather automatic air-suspended swivel seat, ventilated, two levels of heating, lateral damping and dual-motion backrest, with Dynamic Damping System

MADE FOR **PRODUCTIVITY**

The Deluxe cab configuration is a combination of high-spec versatility and refinement. It's designed for large-scale operators looking for advanced features that will ensure cost-effective benefits for their business, especially in terms of automation, precision ag and connectivity.

The Deluxe armrest offers numerous benefits to operating multiple frequently used controls. Deluxe also adds the Datatronic 5 as standard. Use this 9-inch touch-screen terminal to manage tractor functions, simplify implement operations through ISOBUS, and take advantage of MF precision ag.

When you use the Deluxe package, you'll be able to operate the most technologically advanced and demanding implements with optimum efficiency, which adds up to increased profitability.



EXCLUSIVE ELECTRO HYDRAULIC JOYSTICK

- A Lift front linkage or rear valve control +
- B Lower front linkage or rear valve control -
- C Front or rear valve control +
- D Front or rear valve control -

DELUXE VERSION

THE ULTIMATE EXPRESSION OF PRODUCTIVITY AND INNOVATION

COMFORT

STANDARD

QuadLink front axle suspension
 Mechanical active cab suspension
 Automatic air conditioning
 Mirrors with electric de-icing and adjustment
 Automatic air-suspended swivel seat, heated, lateral dampening

OPTION

16 LED working lights
 Rear camera

EFFICIENCY

Dyna-VT transmission — 31 mph standard
 All controls in the ergonomic armrest with MultiPad lever
 Closed center 54 GPM (205 l/min) hydraulics
 Four electrical spool valves with electrical joystick and fingertips

Closed center 54 GPM (205 l/min) ECO hydraulics
 10,580-lb Cat. 3 front linkage
 1,000 rpm front PTO
 Up to eight electrical spool valves fully configurable and customizable on the Deluxe armrest

CONNECTIVITY

Datatronic 5 9-in. touch-screen with new interface — all tractor function & technology
 MF Guide guidance ready from factory
 MF Connect telemetry with five-year subscription
 MF TaskDoc recording all jobs' data
 ISOBUS

MF Guide system with Advanced guidelines
 MF Section & Rate Control
 MF TaskDoc Pro
 Fieldstar 5 terminal

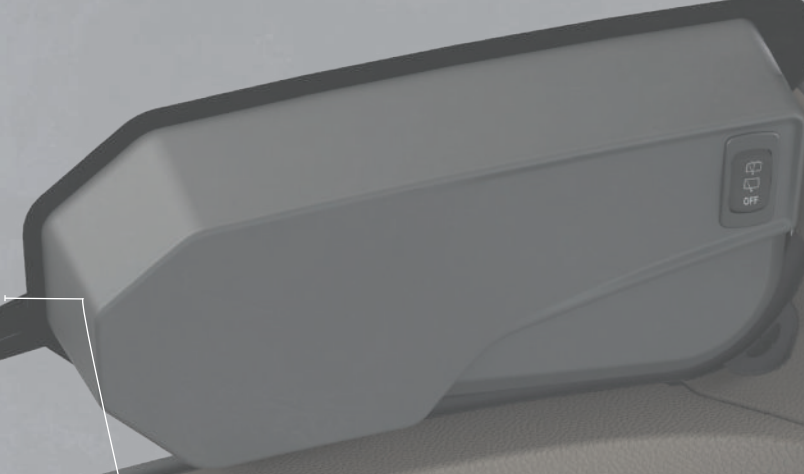
MultiPad lever

Driving mode

Datatronic 5
9 in. terminal



PTO engagement



ISB



F3



H3+

H3-

F1

F2

F3

F4

F5

F6

F7

F8

F9

F10

F11

F12

F13

F14

F15

F16

F17

F18

F19

F20

F21

F22

F23

F24

F25

F26

F27

F28

F29

F30

F31

F32

F33

F34

F35

F36

F37

F38

F39

F40

F41

F42

F43

F44

F45

F46

F47

F48

F49

F50

F51

F52

F53

F54

F55

F56

F57

F58

F59

F60

F61

F62

F63

F64

F65

F66

F67

F68

F69

F70

F71

F72

F73

F74

F75

F76

F77

F78

F79

F80

F81

F82

F83

F84

F85

F86

F87

F88

F89

F90

F91

F92

F93

F94

F95

F96

F97

F98

F99

F100

F101

F102

F103

F104

F105

F106

F107

F108

F109

F110

F111

F112

F113

F114

F115

F116

F117

F118

F119

F120

F121

F122

F123

F124

F125

F126

F127

F128

F129

F130

F131

F132

F133

F134

F135

F136

F137

F138

F139

F140

F141

F142

F143

F144

F145

F146

F147

F148

F149

F150

F151

F152

F153

F154

F155

F156

F157

F158

F159

F160

F161

F162

F163

F164

F165

F166

F167

F168

F169

F170

F171

F172

F173

F174

F175

F176

F177

F178

F179

F180

F181

F182

F183

F184

F185

F186

F187

F188

F189

F190

F191

F192

F193

F194

F195

F196

F197

F198

F199

F200

F201

F202

F203

F204

F205

F206

F207

F208

F209

F210

F211

F212

F213

F214

F215

F216

F217

F218

F219

F220

F221

F222

F223

F224

F225

F226

F227

F228

F229

F230

F231

F232

F233

F234

F235

F236

F237

F238

F239

F240

F241

F242

F243

F244

F245

F246

F247

F248

F249

F250

F251

F252

F253

F254

F255

F256

F257

F258

F259

F260

F261

F262

F263

F264

F265

F266

F267

F268

F269

F270

F271

F272

F273

F274

F275

F276

F277

F278

F279

F280

F281

F282

F283

F284

F285

F286

F287

F288

F289

F290

F291

F292

F293

F294

F295

F296

F297

F298

F299

F300

F301

F302

F303

F304

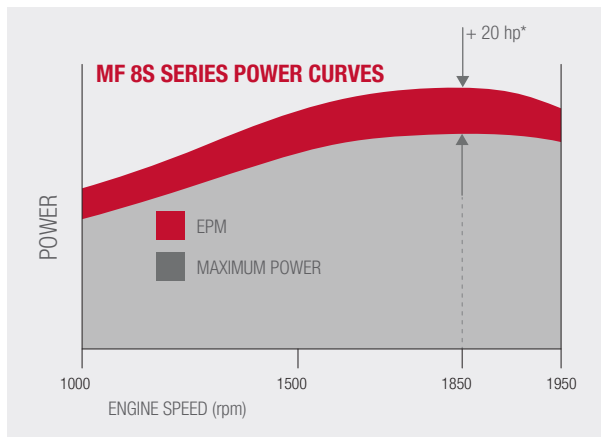
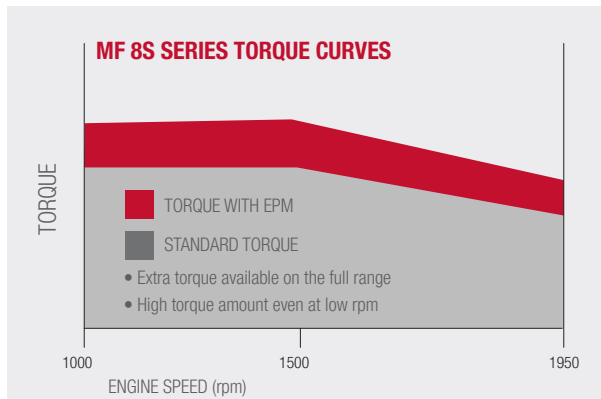
F305

F306

MADE FOR PERFORMANCE

THE PURE EXPRESSION OF
POWER EFFICIENCY

The new MF 8S Series teamed up with the most mature engine SCR technology on the market, the undisputed sustainable leader in heavy-duty farming operations delivering class-leading power and torque, with best-in-class total cost of ownership.



EPM available on the full range (not only at max power)
Constant power between max power rpm and max torque rpm



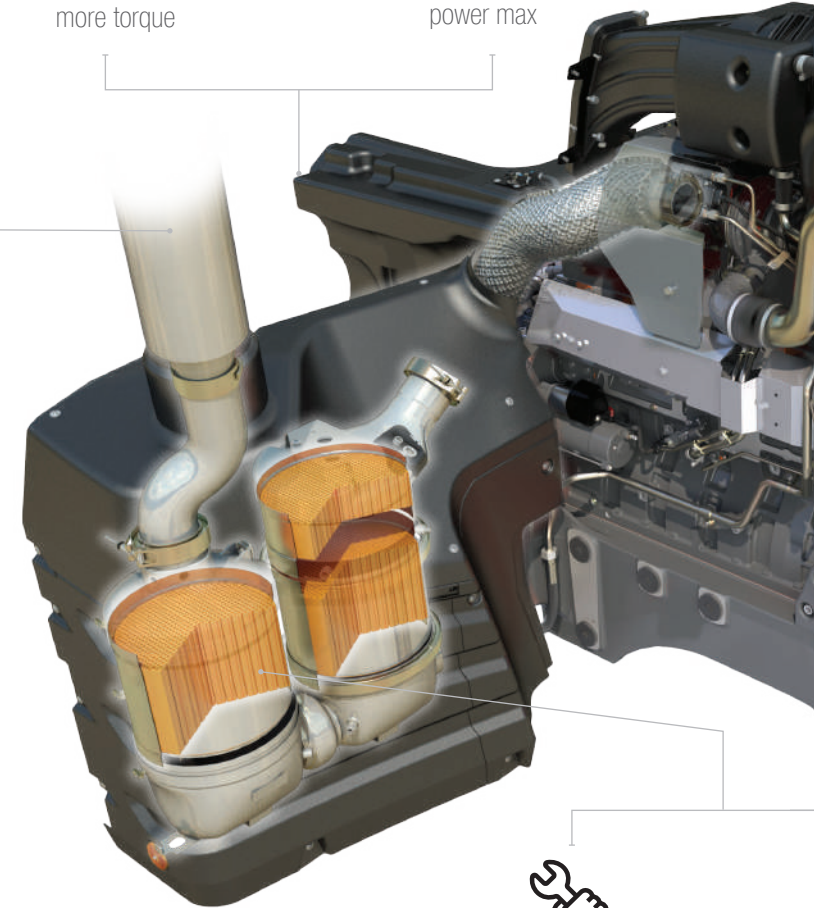
UP TO 12%
more torque



+5HP
power max



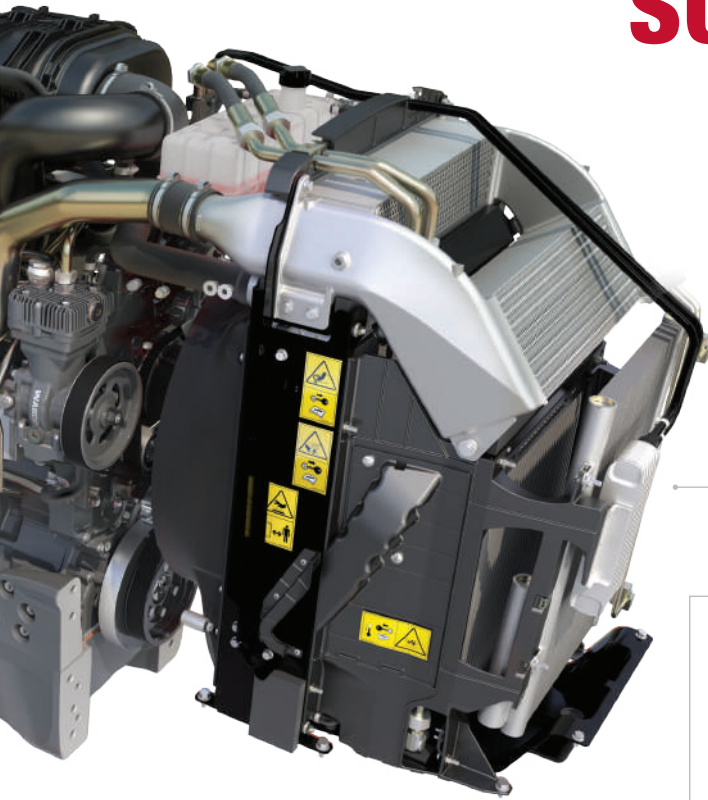
-40%
particle reduction



LOW MAINTENANCE
COSTS

EFFICIENT SUSTAINABILITY

7.4 L, 6-cylinder AGCO Power engine maximizes the advantages of the most environmentally friendly de-pollution system to improve air quality, mitigate climate change and contribute to a quieter environment for the operator and the neighborhood during working hours.



+8% POWER ▶
with Engine Power Management



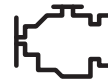
+5%
higher productivity



10%
FUEL SAVINGS



-5.5dB
by lower engine revs



LOW IDLE
Automatic low idle system cuts engine revs to save fuel and reduce noise



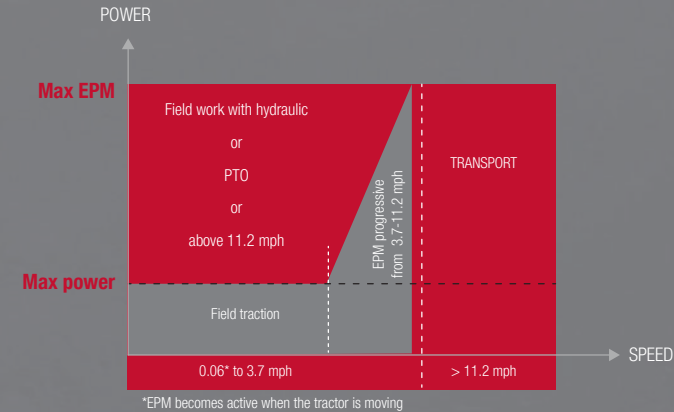
NO COMPROMISE

The All-in-One de-pollution system is packed up neatly under the cab for great visibility

EPM

EPM OFFERS UP TO 20 HP MORE WHEN IT IS MOST NEEDED.

This means your MF 8S Series responds automatically to the load imposed on it and adjusts fueling accordingly to give you extra power. Designed to tackle tough transport and PTO work challenges, advanced electronic engine and transmission management makes more power automatically available under load or at speed.

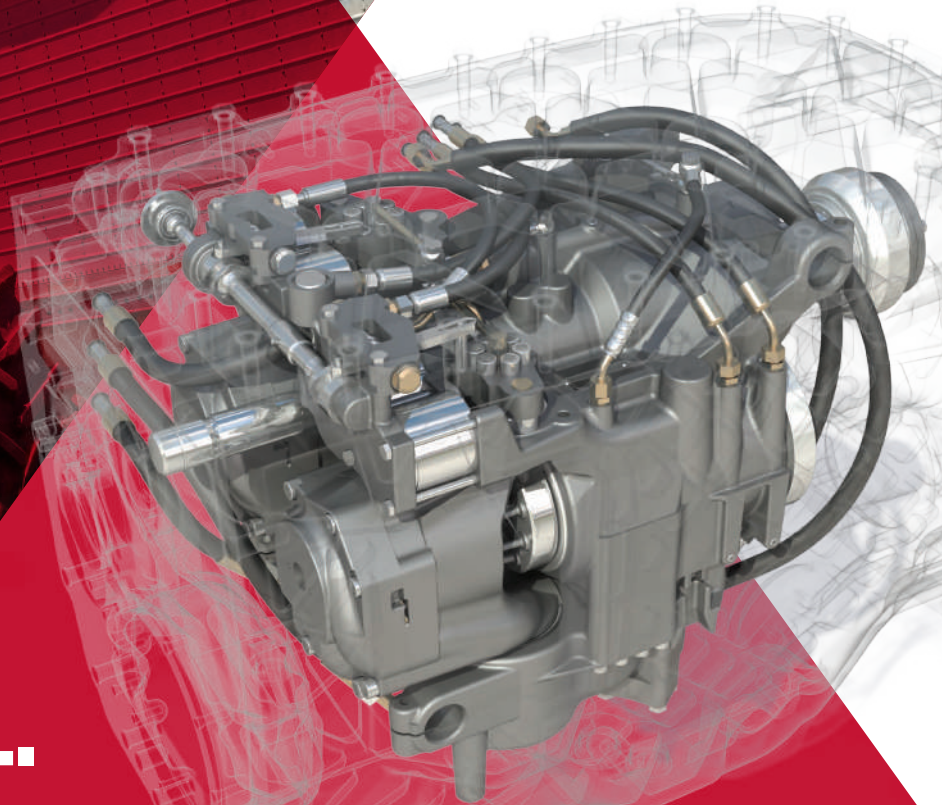


DYNA-VT

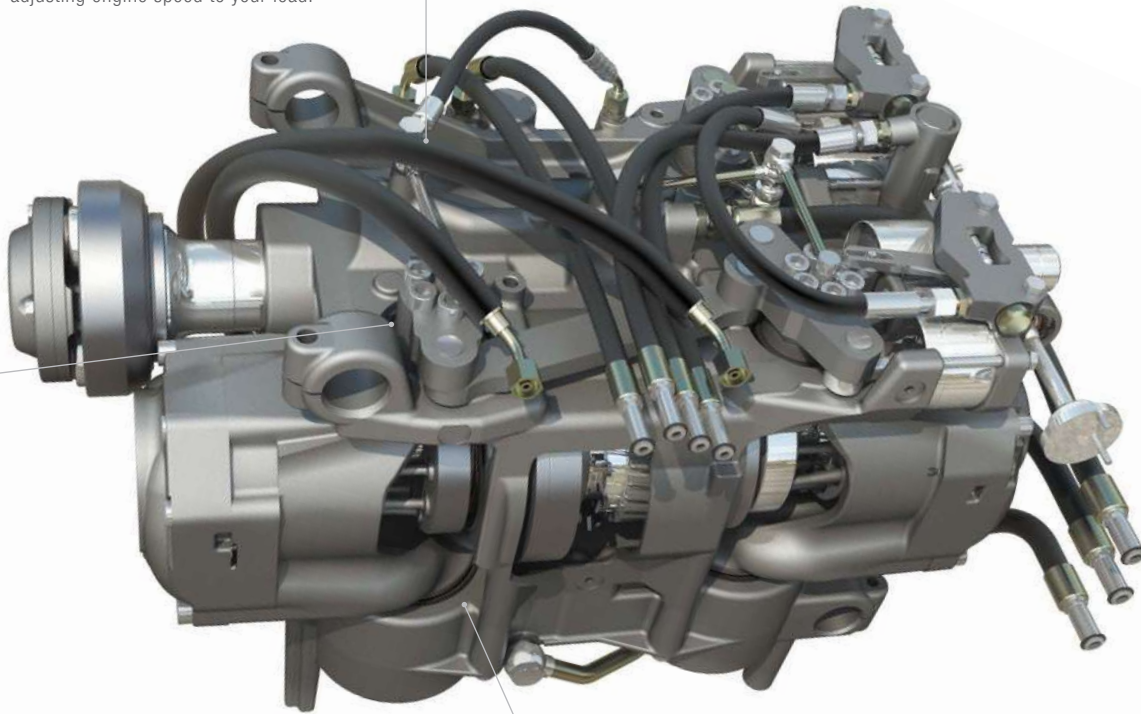
ENGINEERED FOR SUPERIOR
POWER TRANSFER

The Dyna-VT continuously **variable transmission** provides simple, straightforward operation without sacrificing power to the ground or fuel efficiency. Two speed ranges allow you to optimize torque for any task at hand.

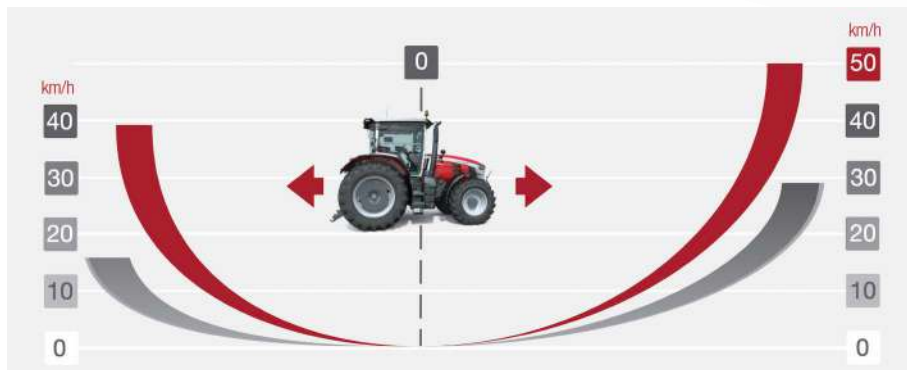
SIMPLE CVT OPERATION.
PRECISE SPEED CONTROL.



The Dyna-VT works hand in hand with our **Dynamic Tractor Management (DTM)** feature. DTM gives you precision control, allowing you to maintain any speed from .03 to 31 mph and automatically adjusting engine speed to your load.



The CVT transmission oil reservoir and the auxiliary hydraulic oil reservoirs are kept separate in the Dyna-VT, eliminating the risk of cross-contamination between them.



DYNA-VT TRANSMISSION BENEFITS AT A GLANCE

- ▶ Two speed ranges optimize torque for different applications
- ▶ Lever, pedal and automatic control offer flexibility, allowing you to focus on your tasks
- ▶ Active Stop and turbo clutch features, along with shuttle aggressiveness and pedal aggressiveness adjustments, give you further levels of control
- ▶ Dynamic Tractor Management (DTM) maintains the set travel speed by automatically adjusting the power (engine speed) according to load
- ▶ Switch easily between two different customizable cruise speed settings (C1 and C2)
- ▶ Brake pedal to neutral feature disconnects drive when the brake pedal is pressed

The same two driving modes are available on the entire MF 8S range:

- ▶ Manual mode with the engine rpm management by the pedal and transmission by the lever
- ▶ Automatic mode, in which the operator controls tractor speed with the pedal and/or the lever, the engine and transmission adapt automatically to the speed and ratio

MADE FOR VERSATILITY & TRACTION

Tractor power means nothing if it cannot be transferred to where it matters: the ground.

With a minimum weight of just 8.7 tons, the MF 8S Series tractors are lighter than others in this class. This allows them to tread lightly for top work and transport, while the strong design also enables them to carry heavy loads or be ballasted up for draft operations.

A wide range of ballast and tire choices, including a large rear wheel diameter of 80.7 inches, ensures that MF 8S Series tractors can be tailored precisely to the tasks that are expected of them, guaranteeing you maximum traction and soil preservation while using a minimum amount of fuel.

That is part of our commitment to help protect the soil and preserve the land for future generations.



PERFECT WHEELBASE FOR THE PERFECT POWER AND SOIL PRESERVATION

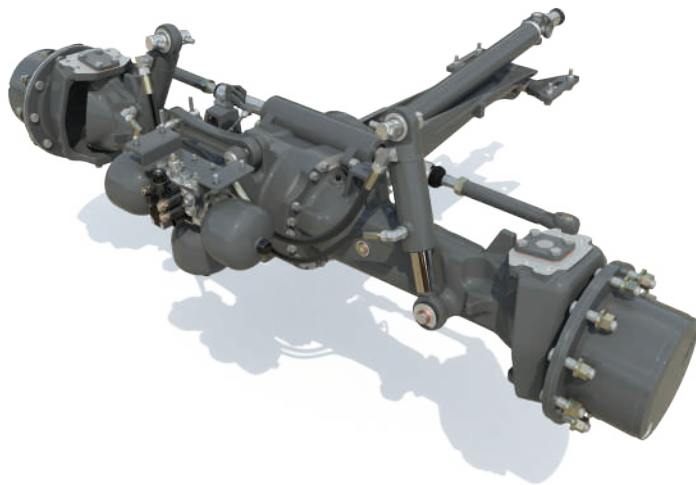
Wheelbase length is 10 feet, offering improved stability with or without a heavy implement, maintaining high levels of traction in the field and increased comfort in transport.

The combination of the wheelbase and the MF 8S Series chassis design means that less ballasting weight is needed, ensuring maximum soil preservation and reduced ground pressure during cultivation, drilling and seeding.



▲ **BALLASTING FOR FLEXIBILITY**

To deal with intensive traction work or counter ballast (front or rear), sometimes you need extra weight, so a wide choice of ballasts is available. The MF 8S Series is available from the factory with additional front and rear weights to exactly match your needs.



◀ **QUADLINK FRONT AXLE SUSPENSION**

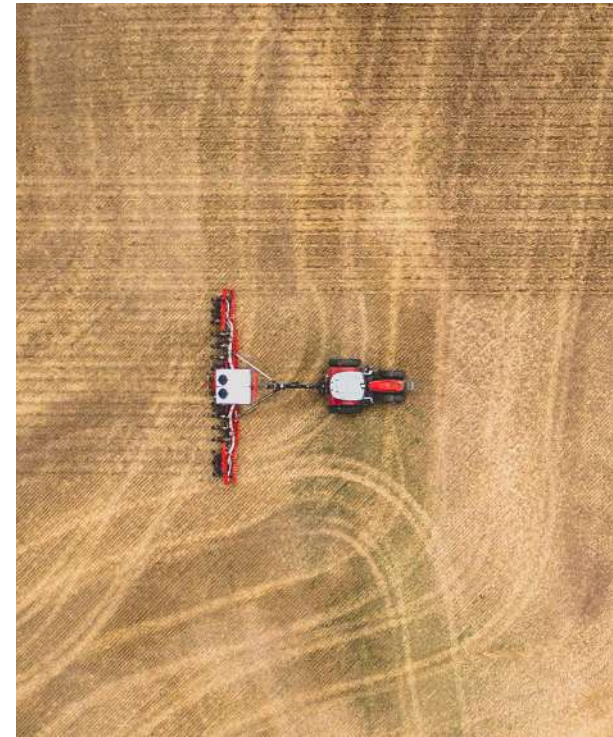
Improved comfort for transport applications and greater traction are delivered by a new and innovative front suspension option. The simple design produces superior ride comfort and a wide turning angle, offering the full angle of oscillation while maximizing ground clearance. Completely maintenance-free.

18.7 ft.
turning radius*

▲ **MANEUVERABILITY**

Experience improved maneuverability for loader operation, in the farm yard and when turning at the headland. The curved design of the chassis and bonnet ensures one of the best turning circles on the market.

▼ **SPEEDSTEER** reduces operator effort and provides faster turns, maximizing your time in the cab. It enables the operator to adjust the steering ratio and select the number of turns of the steering wheel required for a given amount of steering angle turns.



*Track 76.8 inches with 600/70R30 front tires

MADE FOR HARD WORK

UP TO 54 GPM ECO

Hydraulic efficiency is key for the overall performance of the tractor. The MF 8S Series comes standard with 54 GPM. Closed center load-sensing hydraulics and the option of 54 GPM ECO offer you the highest flow at low engine revs to save fuel.



ISOBUS
connector to connect to
your implements.



Up to
2
front spool valves
and free return.



Up to
***9,260 lb.**

lift capacity. Heavy-duty integrated front linkage system (IFLS) is available as an option and is designed to match the front suspension.



1,000 RPM

front PTO is available. Combined with the front linkage, this allows a wide range of additional implements to be powered, reducing passes and improving efficiency. You'll benefit from real-time savings, more than doubling output when mowing grass.

*At frame and full stroke



3 PTO

speeds on Deluxe models: 540 ECO, 1,000 or 1,000 ECO, offering more flexibility, whatever the task. Speeds are achieved at around 1,550 engine rpm, further improving fuel economy and helping to reduce in-cab noise levels.



Up to
***16,500 lb.**

lift capacity from heavy-duty rear linkage with Ultimate Draft Control. Massey Ferguson's digital ELC system gives the highest standards of draft control with more accurate depth settings and better ground contour following. The result is more weight transfer, better traction, less wheel slip, reduced tire wear and reduced fuel consumption while still maintaining greater output.

POWER BEYOND

BUILT INTO THE CCLS SPOOL BLOCK IS A POWER BEYOND FACILITY that provides oil flow directly from the pump via additional flow and return pipes, enabling additional remote spool valves to be connected.



Up to
5
rear spool valves and free return with decompression lever.

MADE FOR PRECISION AG & CONNECTIVITY

The new MF 8S Series takes precision ag and connectivity to new heights with the latest Connective Package, which comes standard.

You'll get real-time information and remote service through the new and more intuitive Datatronic 5 interface and the Fieldstar 5 terminal. These allow you to control precision ag features such as: MF Guide, MF Section and Rate Control, as well as data transfer and management through MF TaskDoc and TaskDoc Pro.

“ We run our operations with the very latest technology in order to reduce inputs and develop excellent data management practices. ”



DATATRONIC 5

Powered by Fuse[®] precision ag solutions

FUSE
SMART FARMING. SYNCHRONIZED.



► **Full tractor function management** and optimization features for transmission, engine and hydraulics. The Dual Control system provides excellent control of semi-mounted plows by automating the furrow entry and exit. At the same time the system adjusts the plow's depth wheel in relation to the rear linkage.



► **ISOBUS for total implement control** — ISOBUS allows an implement manufacturer's control system to be displayed on the terminal screen, saving owners and operators time and money, with no need to install additional monitors in the cab. Simply plug the implement lead into the tractor's ISOBUS socket and the system automatically uploads the operating menus and displays on the screen.



► **Video mode** — Pictures from the on-board camera can be displayed on the console screen, allowing operators to monitor complex implements or simply improve efficiency when reversing.



► **ISOBUS MultiPad switch assignment** — ISOBUS implements can be controlled directly using the MultiPad lever. Having all controls (tractor and implement) on the same lever is a lot more convenient than using additional displays and levers.



► **Headland management settings** — The Datatronic 5 comes as standard with the most intuitive, straightforward and easy-to-use automatic headland management system available in the market. It is designed to save you significant time at headlands, allowing you to concentrate on the operation at hand so that you can maximize outputs with ease.



► **Memorize data and settings** — An unlimited number of user setting configurations enable the system to record information during operation on area worked, fuel use, hours worked and much more. All the settings and parameters can be stored by the Datatronic 5 terminal and recalled to find a previous setting.

MFguide

FUSE SYNCHRO

MADE TO KEEP YOU ON TRACK

MF Guide is Massey Ferguson's full featured, hands-free steering system. MF Guide is capable of delivering sub-foot and sub-inch accuracy, increasing the efficiency of your farming operations.

THE RIGHT RECEIVER FOR THE JOB



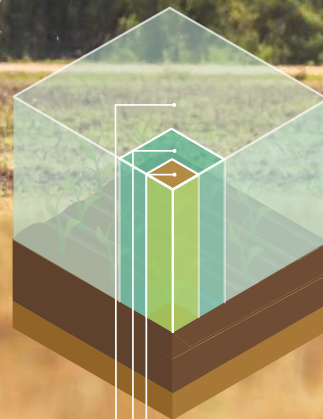
NovAtel



Trimble

With TerraStar RTK Assist, MF Guide continues to work at sub-inch level accuracy for up to 20 minutes without a correction signal. RTK Assist Pro offers unlimited RTK assistance, maintaining the highest accuracy for longer RTK correction outages.

The highly accurate and reliable NovAtel® receiver is recommended for optimal performance of Massey Ferguson's MF Guide system. For those wanting to leverage existing Trimble infrastructures on the farm, such as NTRIP for RTK, MF Guide also offers the option of a Trimble receiver. Talk to your local Massey Ferguson dealer or distributor to find out more.



- <1 in. : NovAtel/Trimble RTK
- 1.5-6 in. : NovAtel/Trimble optional correction signals
- 6-12 in. : NovAtel/Trimble Standard





EASY, FAST SETUP WITH **GO MODE** FUNCTION



Get going within five minutes, even for first-time users. This allows the operator to begin working with auto-guidance/steering for the first time in three easy steps ...



KEY BENEFITS **FOR YOU**



12% FUEL SAVING
Guidance systems are proven to save up to 12% fuel in field operations.



NO OVERLAPS
MF Guide virtually eliminates overlaps.



SAVINGS
Using MF Guide helps you save money by reducing overlaps, precision application and increasing efficiency.



COMFORT
Using MF Guide helps to reduce fatigue and stress by guiding you efficiently through your working day.

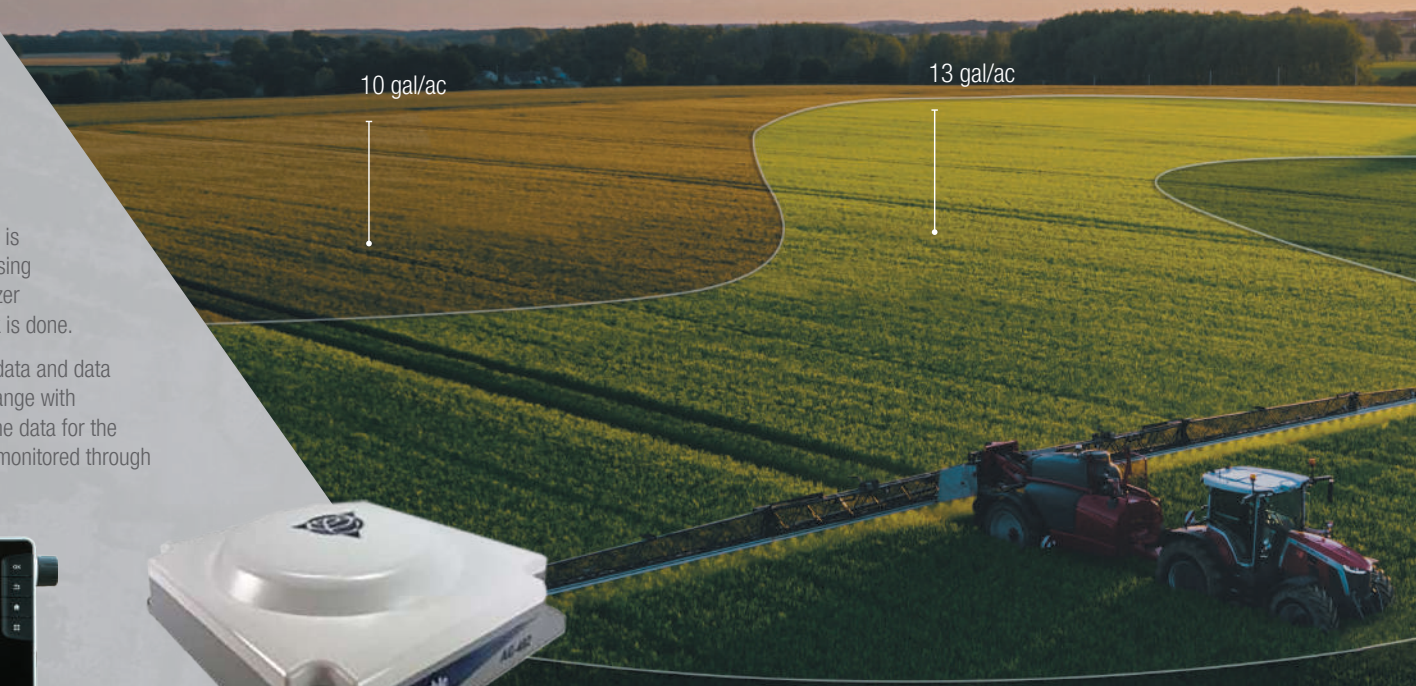
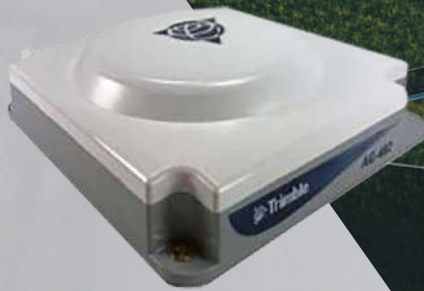
MFtask doc

FUSE SYNCHRONISED

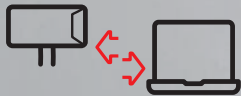
Information is power, with accurate data measurement and recording enabling more precision in decision making. The new TaskDoc system has a place in the future of agriculture, helping farmers to become more productive through the knowledge brought by putting precision-measured data at the business owner's fingertips.

With **TaskDoc** all job data can be recorded with minimal effort, documented in the field record and then analyzed — quickly. The data is transferred via USB drive from the Datatronic 5 terminal to the office using the ISOBUS standard TC-BAS. Data on the quantity of seeds and fertilizer applied or the fuel consumption is available immediately after the work is done.

The **TaskDoc Pro** version also enables recording of the GPS position data and data transfer in real-time via mobile. This makes automatic, seamless exchange with ISOXML-capable field management software and mapping possible. The data for the operating inputs that have been used are transferred and can also be monitored through the Datatronic 5 terminal while working.



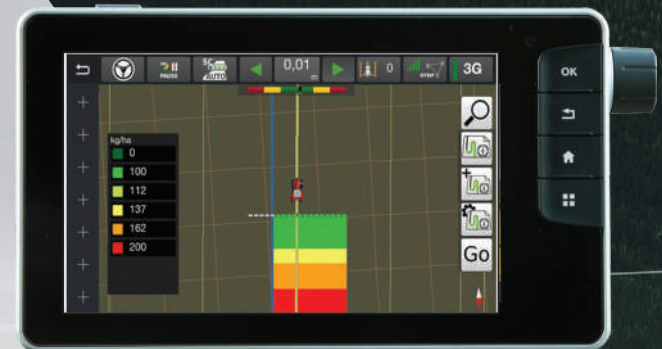
AGRO LINK



MFsection control

FUSE SYNCHRONISED

MF Section Control is the new precision farming solution from Massey Ferguson, featuring management of up to 36 sections and five products simultaneously.



This universal data exchange platform lets you connect machinery and your Farm Management Information System (FMIS), regardless of vendor or manufacturer. You can also determine who to exchange data with, and to what extent. Agro Link is your ticket to the digitalization of agriculture, enabling you to retain control of your data.

PARTS & SERVICE

IT'S ALL ABOUT A LIFETIME OF SUPPORT

Buying, owning and maintaining equipment can be complex. That's why ensuring you have support and peace of mind is always an important consideration. With Massey Ferguson, you can count on personalized, responsive support from our network of dealers.

With Massey Ferguson, there's no cut-off time for Parts and Service, meaning we're available to you throughout the lifetime of your machine.

There's a pride and responsibility built into every piece of equipment we sell, and we make it our mission to keep your machine running smoothly, every single time you turn the key.

Ask your dealer about AGCO Protection, an extended warranty program that prolongs your coverage and safeguards against the cost of sudden breakdowns.



AGCO replacement parts are made to the same high standards as those used on the assembly line, so your AGCO® equipment will stay running like new. Talk to your dealer, or shop at parts.agcocorp.com to find the AGCO Genuine Parts you need.



Focus on your operation, not on scheduling maintenance. With AGCO GenuineCare plans, your service intervals are predetermined. You'll avoid downtime and be able to better plan your costs thanks to transparent pricing, bundles and discounts.



16 gal/ac

MFrate control

FUSE SYNCHRONISED

Variable application with variable rate control (VRC)

Data transfer with TaskDoc Pro now permits variable rate application, based on the needs of the soil or plants, and therefore saves operating inputs. The individual requirements for seeds, fertilizer and pesticides are shown on application maps. They are then called up during operation and automatically executed. The big advantage: Operating inputs can be defined and planned with the aid of the field database and then applied with utmost precision. For example, you can tailor chemical or fertilizer application in areas as required, lowering input cost and further enhancing yields.

14 gal/ac

TECHNICAL SPECIFICATIONS

| ENGINE | | MF 8S.205 | MF 8S.225 | MF 8S.245 | MF 8S.265 | 8S.285 | 8S.305 |
|---|---------------|--|------------------|------------------|------------------|---------------|---------------|
| Engine Type | | AGCO Power | | | | | |
| No. of cylinders / No. of valves / Capacity | No. / No. / L | 6 / 4 / 7.4 | | | | | |
| Bore / Stroke | mm / mm | 108 / 134 | | | | | |
| Aspiration | | Turbo with electrical wastegate and intercooler | | | | | |
| Injection type | | Common rail | | | | | |
| Fan type | | Vistronic | | | | | |
| *Rated HP | HP PS (kW) | 190 (142) | 210 (157) | 230 (172) | 250 (186) | 270 (201) | 290 (216) |
| Rated PTO HP (SAE) | HP (kW) | 150 (112) | 170 (127) | 190 (142) | 205 (153) | 220 (164) | 240 (179) |
| Engine rpm at rated HP | rpm | 1,950 | | | | | |
| *Maximum HP | HP PS (kW) | 205 (151) | 225 (165) | 245 (180) | 265 (195) | 285 (210) | 305 (225) |
| Engine rpm at maximum HP | rpm | 1,500 | 1,550 | | | 1,850 | |
| *Maximum power with EPM | HP PS (kW) | 225 (165) | 245 (180) | 265 (195) | 285 (210) | 305 (225) | — |
| Fuel tank capacity | gal | 132.1 | | | | | |
| DEF tank capacity | gal | 11.4 | | | | | |
| Service interval | hours | 600 | | | | | |
| DYNA-VT TRANSMISSION | | | | | | | |
| Type | | Stepless, continuously variable transmission with Dynamic Tractor Management (DTM) | | | | | |
| Field speed range | mph | .018 - 17 mph forward and .018 - 23 mph reverse | | | | | |
| Road speed range | mph | .018 - 31 mph forward and .018 - 23 mph reverse 25 mph Eco at 1,400 rpm - 31 mph Eco at 1,550 rpm | | | | | |

*ISO 14396
Depending on market legislation

Every effort has been made to ensure that the information contained in this publication is as accurate and current as possible. However, inaccuracies, errors or omissions may occur and details of the specifications may be changed at any time without notice. Therefore, all specifications should be confirmed with your Massey Ferguson dealer or distributor prior to any purchase.

| | | MF 8S.205 | MF 8S.225 | MF 8S.245 | MF 8S.265 | 8S.285 | 8S.305 |
|--|------|-----------------------|-----------|-----------|--|--------|--------|
| Rear Linkage and Hydraulics | | | | | | | |
| Lower links type | CAT | | | | Cat. 3 | | |
| Maximum lift capacity, at link end | lbs. | | | | 22,046 | | |
| Hydraulic type & max flow - Option 1 | | | | | Closed center load-sensing 54 gal/min. @ 2,050 rpm | | |
| Hydraulic type & max flow - Option 2 | | | | | Closed center load-sensing Eco 54 gal/min. @ 1,650 rpm | | |
| Maximum pressure | psi | | | | 2,900 | | |
| Maximum no. of rear spool valves | | | | | 5 | | |
| Power Take-Off (Rear) | | | | | | | |
| Engine speed | | | | | | | |
| 540 ECO / 1,000 / 1,000 ECO | rpm | | | | 1,499 / 1,903 / 1,528 | | |
| Shaft diameter | | | | | 1 3/8" 6 & 21 splines 1 3/4" 20 splines | | |
| Front linkage and Front Power Take-Off | | | | | | | |
| Maximum lift capacity, at frame & full stroke | lbs. | | | | 9,260 | | |
| Maximum no. of front spool valves | | | | | 2 | | |
| Engine speed at 1,000 front PTO speed | rpm | | | | 1,920 | | |
| Wheels and Tires (Full range available. Please consult your dealer) | | | | | | | |
| Front | | 420 / 90R30 R1W | | | 420 / 85R34 R1W | | |
| Rear | | 480 / 80R46 R1W Duals | | | 480 / 80R50 R1W Duals | | |
| Weights (May vary depending on configuration. Please consult your dealer) | | | | | | | |
| Average minimum weight with no ballast, no accessories | lbs. | | | | 19,180 | | |
| Maximum gross vehicle weight* | lbs. | | | | 35,273 | | |

DIMENSIONS

| | | MF 8S (all models) |
|---|-----|--------------------|
| A Wheelbase | in. | 120.1 |
| B Overall length from front linkage to rear linkage arms | in. | 211.6 |
| C Height at center of rear axle to the top of MF Connect antennas | in. | 94.1 |
| D Total height | in. | 133.5 |





APPLY NOW FOR PRE-APPROVAL*
www.masseyferguson.us



or scan the QR code to get started.



*Currently only available for individual applicants. Subject to credit review and approval and other terms and conditions. All financing is in AGCO Finance LLC's sole discretion. ©2023 AGCO Corporation. Massey Ferguson is a worldwide brand of AGCO Corporation. AGCO and Massey Ferguson are trademarks of AGCO. All rights reserved. | MF22B011FCV02



MASSEY FERGUSON

BORN TO **FARM**