





SIMPLY POWERFUL
SIMPLY VERSATILE

TABLE OF CONTENTS

TRACTORS

DELTATRACK	4
4WD	10
MFWD/ROW CROP	16
NEMESIS	22

TILLAGE

FURY HIGH SPEED DISC	28
VIKING VERTICAL TILLAGE	34
TANDEM DISC	40
OFFSET DISC	46

DELTATRACK TRACTORS

MODELS: 520DT / 570DT / 610DT

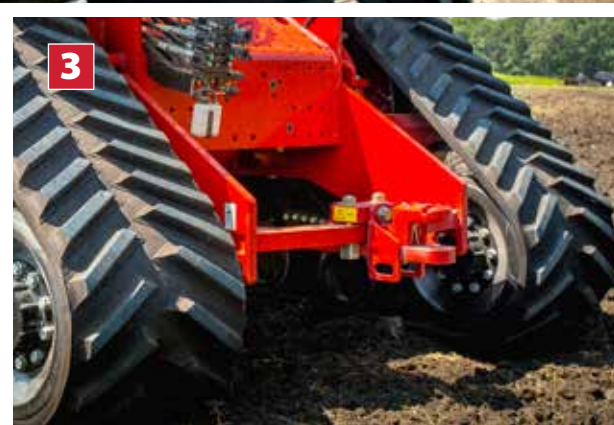
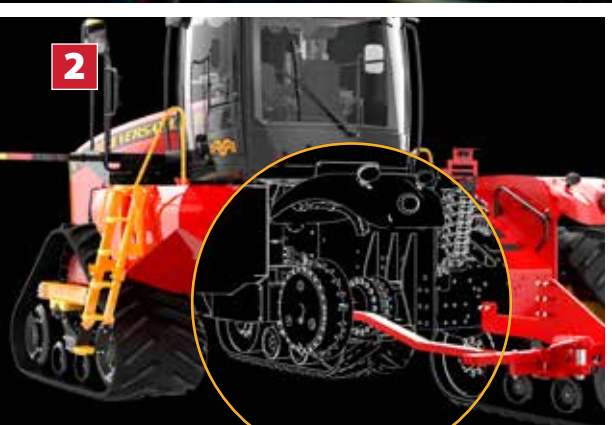
The Versatile DeltaTrack features the most advanced undercarriage in the industry. Developed in partnership with CAMSO, the undercarriage uses a positive drive system to help reduce wear, friction and heat. Farmers

can get more work done with a powerful Cummins X15 engine and heavy-duty CAT® TA22 powershift transmission. More than just power, the largest cab in the industry provides excellent comfort and 85.9 sq.

ft. (7.98 sq. m) of viewable window glass for improved visibility and reduced operator fatigue. The three available tractor models are 520DT, 570DT and 610DT.

MADE FOR THE TOUGHEST JOBS

THE CLASS LEADER IN THE AGRICULTURAL MARKET



1. CAB

The largest cab in the industry offers excellent 360-degree visibility with 85.9 sq. ft. (7.98 sq. m) of window glass. The full-featured cab includes intuitive controls and provides every operator comfort. The four-post suspended cab comes standard and helps reduce pitch and roll movement for a smoother ride.

2. DRAWBAR

The drawbar pull from the center of the tractor helps maximize the transfer of power to the ground. The standard Category IV drawbar features a vertical load capacity of 9,000 lb (4,082 kg) with optional HD Drawbar Support available to increase the load capacity for implements such as grain carts. The Category V drawbar upgrades vertical load capacity to 15,000 (6,804 kg).

3. HEAVY-DUTY FRAME

The tractor frame excels in the harshest and toughest working conditions with unmatched ground clearance. The robust design and increased weight (58,850 lb / 26,694 kg) improves tractor longevity and contact with the ground.

4. TRACK SYSTEM

Developed in partnership with CAMSO, the tractor features the most advanced undercarriage in the industry. The DeltaTrack comes complete with standard CAMSO 3500 series tracks or upgrade to optional 6500 series tracks.

DELTATRACK TRACTORS

MODELS: 520DT / 570DT / 610DT

MADE FOR THE TOUGHEST JOBS

THE CLASS LEADER IN THE AGRICULTURAL MARKET

5



6



7



5. SUSPENDED CAB

The four-post suspended cab provides one of the smoothest rides available. The cab is mounted onto the four-point shock and spring system that works in tandem with the tuned torque arms that reduce pitch and roll movement.

6. CUMMINS ENGINE

The powerful X15 Cummins engine delivers an impressive 13% power bulge at 2,100 RPM. The engine can achieve up to a 60% torque rise, an increase of 25% over previous generations. The second-to-none engine displacement and Cummins VGT (Variable Geometry Turbo) produce excellent torque response and pulling power.

7. CAT® TRANSMISSION

The heavy-duty CAT® TA22 powershift transmissions are fully programmable for auto-shift and speed matching. The 16 forward and four reverse gears shift seamlessly under load to create a more comfortable operating environment. Built to last, CAT® transmissions are 40 - 80% larger in size and weight when compared to the competition.

8. ADVANCED HYDRAULICS

Four remote valves are standard, six optional. The tractor is equipped with a standard 53 gpm (201L/min) pump or optional 106 gpm (401 L/min) high flow pump hydraulic system. Fingertip controls manage the hydraulic functions, and hydraulic flow is increased and decreased using the high-resolution monitor.



QUICK TAKEAWAYS

LARGEST CAB IN THE INDUSTRY

The spacious cab provides superior comfort and excellent 360-degree visibility. The full-featured cab includes a comfortable semi-active air-ride suspension seat and a 10" (254 mm) high-resolution monitor.

SUSPENDED CAB

The standard four-post suspended cab creates a smoother ride and reduces pitch and roll movement.

EASY TO UNDERSTAND CONTROLS

Logical and straightforward controls help minimize the learning curve for new users. This saves time when training staff on tractor functions.

POWERFUL CUMMINS ENGINE

The Cummins engine delivers industry-leading performance. The second-to-none engine displacement and Cummins Variable Geometry Turbo technology produce excellent torque response and pulling power.

RELIABLE CAT® TRANSMISSION

Seamlessly shift between gears with a CAT® TA22 (16F x 4R) powershift transmission. The transmission is fully programmable for auto-shift and speed matching capabilities.

ADVANCED TRACK TECHNOLOGY

The DeltaTrack features the most advanced undercarriage in the industry and uses a positive drive system to reduce wear, friction and heat. Developed in partnership with CAMSO, the tractor comes standard with CAMSO 3500 series tracks or an optional 6500 series upgrade.

LEGENDARY OUTBOARD PLANETARY

The outboard planetary axle is known for its strength and ease of service. The planetary delivers horsepower directly to the ground and minimizes the impact of power transfer while turning, making it easier to turn sharply with large implements and heavy loads.

SEPARATE OIL CHAMBERS

The separate oil chambers on the tractor help ensure that the correct oil is used for the correct application. For example, the differentials use different oil than the hydraulics.

DELTATRACK TRACTORS SPECIFICATIONS

MODELS: 520DT / 570DT / 610DT

	520DT	570DT	610DT
ENGINE			
Engine type	Cummins X15		
Aspiration	Turbocharged & air-to-air aftercooled		
Displacement	14.9 L (909 cid)		
Horsepower (SAE)	520 hp (387 kW)	570 hp (425 kW)	605 hp (455 kW)
Power bulge	11% @ 1,800 RPM	10% @ 1,800 RPM	7% @ 1,800 RPM
Peak horsepower	572 hp (427 kW)	626 hp (467 kW)	650 hp (485 kW)
Torque rise	51% @ 1,400 RPM	48% @ 1,400 RPM	49% @ 1,400 RPM
Peak torque	1,700 lb/ft (2,305 N-m)	1,850 lb/ft (2,508 N-m)	2,050 lb/ft (2,779 N-m)
FUEL SYSTEM			
Capacity	462 U.S. gal (1749 L)		
Filter	Engine mounted w/water separator		
DEF	24 U.S. gal (91 L) - Usable		
TRANSMISSION			
Powershift transmission	CAT® TA22 transmission (16 forward speeds, 4 reverse)		
AXLES			
Versatile outboard planetary axles	Heavy-duty		
Differential lock	Optional	Standard	
Brakes	Dual hydraulic self-adjusting disc brakes, front & rear axle		
Wheelbase	154" (3,900 mm)		
HYDRAULICS			
Advanced hydraulic type	Closed center load sensing system		
Hydraulic flow (standard)	53 gpm (201 L/min)		
High flow system (optional)	106 gpm (401 L/min)		
Hydraulic remotes (standard)	4 remotes		
High flow remotes (optional)	6 remotes		
Maximum system pressure	2,900 PSI (197 bar)		

	520DT	570DT	610DT
ELECTRICAL SYSTEM			
Alternator	12V - 200 amps		
Batteries	3-12V, 1,000 CCA ea.		
LED lighting / Power mirrors	Optional / Optional		
DRAWBAR / HITCH			
Drawbar type (standard)	Category IV drawbar		
Drawbar type (optional)	Category V drawbar		
Drawbar support (optional)	HD Drawbar Support (only available on Category IV)		
Vertical load rating	Category IV (9,000 lb/4,082 kg) Category IV w/HD Drawbar Support (12,000 lb/5,443 kg) Category V (15,000 lb/6,804 kg)		
Hitch pin diameter (w/auto drop)	Category IV (2" pin) / Category V (2.75" pin)		
3-point hitch	Category IV		
Quick hitch	Optional		
PTO	1,000 RPM 1.75" shaft		
CAB			
Volume	175.5 cu. ft. (4.97 cu. m)		
Glass	85.9 sq. ft. (7.98 sq. m)		
Suspended (passive 4 post)	Cab pitch:<0.5~ @0.6 G's, Cab roll:<1~ @0.6 G's, Vertical suspension travel:+/-50mm		
TRACKS			
CAMSO 3500 series	30" tracks or 36" tracks		
CAMSO 6500 series (optional)	30" tracks or 36" tracks		
WEIGHTS			
Base tractor weight*	58,850 lb (26,694 kg)		
Recommended operating GVW	61,000 lb (27,669 kg)		
*A standard drawbar, no fuel, no operator, no special added equipment and no ballast.			

NOTE: Specifications are correct at time of publishing and are subject to change

4WD TRACTORS

MODELS: 405 / 430 / 460 / 520 / 570 / 610

Versatile has been manufacturing high horsepower tractors since 1966. The current generation of Versatile four-wheel-drive tractors are built to be the best pulling machines on the market. Designed for the toughest jobs,

the tractors are powered by reliable Cummins engine technology and heavy-duty CAT® powershift transmissions that are fully programmable for auto-shifting and speed matching. The logical and straightforward controls also

help increase productivity while minimizing the learning curve for new users. Choose from a wide range of available narrow frame (405 - 460) and large frame (520 - 610) four-wheel-drive models.

THE BEST PULLING MACHINE

LEGACY OF RELIABILITY, DURABILITY AND EASE OF SERVICE



1. CAB

The largest cab in the industry offers excellent visibility with 85.9 sq. ft. (7.98 sq. m) of window glass. The full-featured cab includes intuitive controls and standard features including a semi-active suspension seat and climate control options. Optional four-post suspension helps reduce pitch and roll movement for a smoother ride (available on 520, 570 and 610 models).

2. DRAWBAR

The drawbar pull from the center of the tractor helps transfer more power to the ground. The Category IV drawbar comes standard with optional HD Drawbar Support available to increase the load capacity, a upgraded Category V drawbar is also available. The drawbars feature a vertical load capacity ranging from 6,000 lb (2,722 kg) – 15,000 lb (6,804 kg).

3. SIMPLE MAINTENANCE

Daily and regular maintenance can be completed in a fraction of the time with easily accessible service and sight gauges. The gullwing-style side panels also open wide to provide excellent service access to all under-hood components.

4. HEAVY-DUTY FRAME

The heavy-duty frame excels in the harshest working conditions with unmatched ground clearance. The size, robust design and increased weight of the tractor frame help improve the overall longevity.

4WD TRACTORS

MODELS: 405 / 430 / 460 / 520 / 570 / 610

THE BEST PULLING MACHINE

LEGACY OF RELIABILITY, DURABILITY AND EASE OF SERVICE



5. ADVANCED HYDRAULICS

Tractors are equipped with a standard 53 gpm (201L/min) pump or optional 106 gpm (401 L/min) high flow pump hydraulic system. Four remote valves are standard, six optional.

6. CUMMINS ENGINE

Cummins remains the exclusive engine supplier across the entire range of Versatile tractors. Built to work until the job is done, the tractors are powered by a dependable Cummins X12 engine (narrow frame) or Cummins X15 (large frame).

7. CAT® TRANSMISSION

The entire line of Versatile four-wheel drive tractors come complete with CAT® powershift transmissions. The TA19/TA20 (16F x 4R) transmissions are fully programmable for auto-shift and speed matching. Efficiently move between fields with road speeds up to 25 mph (40 km/hr).

8. SEPARATE OIL CHAMBERS

The separate oil chambers reduce overall maintenance costs and help ensure that the correct oil is used for the correct application. For example, the differentials use different oil than the hydraulics.

QUICK TAKEAWAYS

CHOICE OF MODEL:

- **NARROW FRAME TRACTOR (380/405/430/460)**

The narrow frame models feature a dependable Cummins X12 engine and CAT® TA19 (16F x 4R) powershift transmission. The 11.8 L in-line six-cylinder turbocharged engine delivers superior performance using advanced combustion technology.

- **LARGE FRAME TRACTOR (520/570/610)**

The large frame models feature a Cummins X15 engine and heavy-duty CAT® TA22 (16F x 4R) transmission for excellent power and torque. The high displacement six-cylinder engine ensures the tractor is never short on power.

LARGEST CAB IN THE INDUSTRY

The spacious cab provides superior comfort and excellent 360-degree visibility for reduced operator fatigue.

EASY TO UNDERSTAND CONTROLS

Straightforward controls increase productivity while minimizing the learning curve for new users.

SIMPLE SERVICE AND MAINTENANCE

Improved access to all fill and grease points makes daily maintenance feel easy. The hydraulic and fuel sight gauges are also visible from the ground without opening side panels or removing shields.

POWERFUL CUMMINS ENGINE

Cummins remains a market leader in horsepower and torque. The Cummins engine series remains the exclusive engine supplier across the entire range of Versatile tractors.

DEPENDABLE CAT® TRANSMISSION

The smooth-shifting powershift transmissions provide a large selection of working gears for every application. Both the TA19 and TA22 transmissions are programmable for auto-shifting and speed matching.

LEGENDARY OUTBOARD PLANETARY

The Versatile outboard planetary axle is known for its strength, simplicity and ease of service. The planetary axle delivers horsepower where it matters the most, at the ground.

4WD TRACTORS SPECIFICATIONS

MODELS: 405 / 430 / 460 / 520 / 570 / 610

	405	430	460	520	570	610
ENGINE						
Engine type	Cummins X12			Cummins X15		
Aspiration	Turbocharged & air - to - air aftercooled					
Displacement	11.8 L (720 cid)			14.9 L (909 cid)		
Horsepower	400 hp (298 kW)	430 hp (320 kW)	460 hp (343 kW)	520 hp (387 kW)	570 hp (425 kW)	605 hp (455 kW)
Power bulge	13% @ 1,800 RPM	11% @ 1,800 RPM	11% @ 1,800 RPM	11% @ 1,800 RPM	10% @ 1,800 RPM	7% @ 1,800 RPM
Peak horsepower	450 hp (336 kW)	475 hp (354 kW)	512 hp (382 kW)	572 hp (427 kW)	626 hp (467 kW)	650 hp (485 kW)
Torque rise	60% @ 1,400 RPM	51% @ 1,400 RPM	51% @ 1,400 RPM	51% @ 1,400 RPM	48% @ 1,400 RPM	49% @ 1,400 RPM
Peak torque	1,600 lb/ft (2,169 N-m)	1,693 lb/ft (2,296 N-m)	1,696 lb/ft (2,300 N-m)	1,700 lb/ft (2,305 N-m)	1,850 lb/ft (2,508 N-m)	2,050 lb/ft (2,779 N-m)
FUEL SYSTEM						
Capacity	250 US gal (946 L)			343 U.S. gal (1,298 L)		
Filter	Engine mounted w/water separator					
DEF	25 U.S. gal (95 L)			35 U.S. gal (132 L)		
TRANSMISSION						
Powershift transmission	CAT® TA19 transmission (16 forward speeds, 4 reverse)			CAT® TA22 transmission (16 forward speeds, 4 reverse)		
Maximum speeds	22 mph (35 km/hr)			23.5 mph (40 km/hr)		
AXLES						
Versatile outboard planetary axles	Heavy-duty					
Differential lock	Optional					Standard
Brakes	Dual hydraulic self-adjusting disc brakes, front & rear axle					
Wheelbase	135" (3,429 mm)			154" (3,900 mm)		
HYDRAULICS						
Advanced hydraulic type	Closed center load sensing system					
Hydraulic flow (standard)	53 gpm (201 L/min)					
High flow system (optional)	106 gpm (401 L/min)					
Hydraulic remotes (standard)	4 remotes					
High flow remotes (optional)	6 remotes					
Maximum system pressure	2,900 PSI (197 bar)					

	405	430	460	520	570	610
ELECTRICAL SYSTEM						
Alternator	12V - 200 amps					
Batteries	3-12V, 1,000 CCA ea.					
LED lighting / Power mirrors	Optional / Optional					
Battery shut-off switch	Standard					
DRAWBAR / HITCH						
Drawbar type (standard)	Category IV drawbar					
Drawbar type (optional)	-			Category V drawbar		
Drawbar support (optional)	HD Drawbar Support (only available on Category IV)					
Vertical load rating	Category IV (6,000 lb/2,722 kg) Category IV w/HD Drawbar Support (9,000 lb/4,082 kg)			Category IV (9,000 lb/4,082 kg) Category IV w/HD Drawbar Support (12,000 lb/5,443 kg) Category V (15,000 lb/6,804 kg)		
Hitch pin diameter (w/auto drop)	2" (51 mm)					
3-point hitch	Category IVN / III			Category IV		
Quick hitch	Optional					
PTO	1,000 RPM, 1-3/4" shaft					
CAB						
Volume	175.5 cu. ft. (4.97 cu. m)					
Glass	85.9 sq. ft. (8 sq. m)					
WEIGHTS						
Base tractor weight	31,500 lb (14,288 kg)			42,000 lb (19,051 kg)		
Max. operating weight	40,000 lb (18,144 kg)	43,000 lb (19,504 kg)	46,000 lb (20,865kg)	52,000 lb (23,587 kg)	57,000 lb (25,855 kg)	61,000 lb (27,669 kg)

NOTE: Specification are correct at time of publishing and are subject to change

MFWD TRACTORS

MODELS: 275 / 295 / 315 / 335 / 365

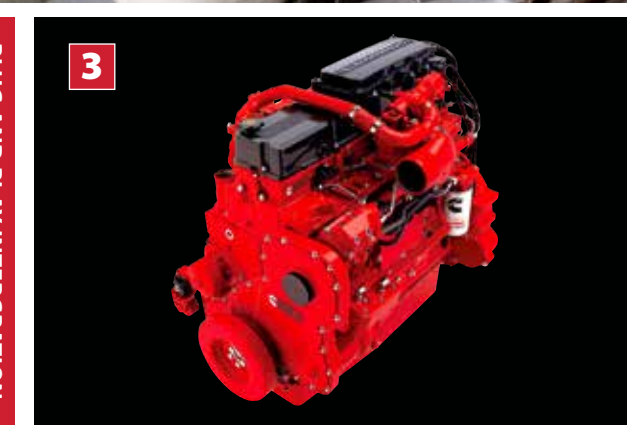
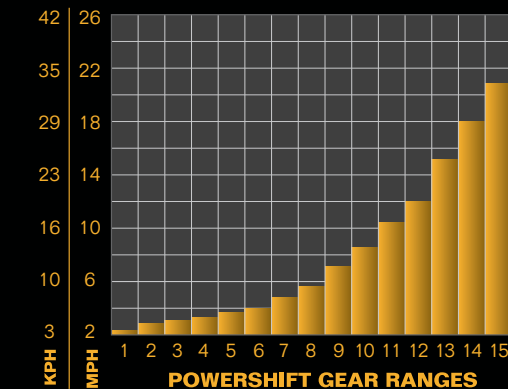
Versatile has been producing powerful front-wheel assist tractors since 1993. The current generation of MFWD tractors continue the company legacy of rugged and reliable tractors built with pride in

Winnipeg, Manitoba. With over 25 years of field-proven performance, the tractors are powered by a Cummins QSL9 engine and smooth-shifting 16 X 9 powershift transmission. Farmers can also take advantage of the

class-leading Versatile cab with over 73 sq. ft. (6.83 sq. m) of viewable window glass for improved visibility. The five available horsepower ratings are 275 hp, 295 hp, 310 hp, 335 hp and 365 hp.

EXPERIENCE TRUE PRODUCTIVITY

DELIVERS A COMBINATION OF POWER, ECONOMY AND PERFORMANCE



1. CAB

Stay comfortable with the largest cab in the industry and enjoy a panoramic view of the field with over 73 sq. ft. (6.83 sq. m) of window glass. The 10" high-resolution monitor also supports two external cameras and displays hydraulic settings for quick reference.

2. UNIVERSAL AUTO-STEER

Make long days feel easier and experience excellent productivity with universal auto-steer. The auto-steer is designed for plug and play integration with almost any farming system. The following can help boost efficiency on the farm while saving time and money.

3. CUMMINS ENGINE

The Cummins QSL9 engine seamlessly combines power, productivity and fuel efficiency. The engine provides improved torque and faster throttle response when compared to other engines in its class. Powerful peak horsepower specs ranging from 300 - 400 hp (216 - 298 kW), depending on tractor model.

4. TRANSMISSION

The Versatile 16 x 9 powershift transmission has been refined for smooth-shifting, particularly when under load. Maximum working speed of 25 mph (40 km/hr). The models 335 and 365 are equipped with a larger transmission with more clutch plates to handle the extra power.

2

3

PLUG AND PLAY INTEGRATION

MFWD TRACTORS

MODELS: 275 / 295 / 315 / 335 / 365

EXPERIENCE TRUE PRODUCTIVITY

DELIVERS A COMBINATION OF POWER, ECONOMY AND PERFORMANCE



5. ACCESSIBLE COMPONENTS

Service is made quick and easy with accessible components. For example, the oil filter is easily accessible under the right side steps. The filter is vertically mounted and is a spin-on type for quick, clean service.

6. ADVANCED HYDRAULICS

Equipped with a standard 55 gpm (208 L/min) pump or optional 273 L/min (72 gpm) high flow hydraulic system. The hydraulic flow is increased and decreased using the high-resolution monitor. Four remote valves are standard, six optional.

7. ARMREST CONTROLS

The armrest controls easily manage the auto shift and hand throttle for fingertip control over the entire tractor. The hand throttle provides immediate throttle control over the engine. Additional storage compartments are available under the armrest.

8. SIMPLE MAINTENANCE

Daily maintenance and routine service can extend tractor life, minimize downtime and lower operating costs. The hydraulic and fuel sight gauges are easily visible from the ground without opening side panels or removing shields.



QUICK TAKEAWAYS

LARGEST CAB IN THE INDUSTRY

The most spacious cab in the industry provides excellent operator comfort and over 73 sq. ft. (6.83 sq. m) of window glass for improved visibility.

IDEAL CAB ENVIRONMENT

Stay comfortable in the field with a semi-active air-ride suspension seat, climate controls options and large multi-directional vents.

EASY TO LEARN CONTROLS

Simple and intuitive controls are easy to learn and allow operators to stay focused on the task at hand. This reduced learning curve can help limit the risk of equipment damage, reduce operator fatigue and make the operation more efficient.

QUICK & SIMPLE SERVICE

Versatile tractors are designed for easy daily service because there are never enough hours in the day. Routine service and maintenance can minimize downtime and lower overall operating costs.

UNIVERSAL AUTO-STEER

Universal auto-steer allows for the integration of almost any farming system. The auto-steer can easily connect to farming systems to help save farmers time and money.

POWERFUL CUMMINS ENGINE

The Cummins QSL9 engine features the latest in diesel engine technology. Cummins is the exclusive engine supplier across the entire range of Versatile tractors.

DURABLE POWERSHIFT TRANSMISSION

Further drive power to the ground with the Versatile 16 x 9 powershift transmission. The transmission has been refined for smooth operation, particularly when under load.

HEAVY-DUTY FRAME

The heavy-duty tractor frame is designed to improve the turning radius and allow for larger tires and more configurations. The improved turning radius is most evident during the end of row functions.

MFWD TRACTORS SPECIFICATIONS

MODELS: 275 / 295 / 315 / 335 / 365

	275	295	315	335	365
ENGINE					
Engine type	Cummins QSL9				
Aspiration	Turbocharged & air-to-air aftercooled				
Displacement	9 L (549 cid)				
Horsepower (SAE)	275 hp (198kW) @ 2,100 RPM	295 hp (220 kW) @ 2,100 RPM	310 hp (231 kW) @ 2,100 RPM	335 hp (250 kW) @ 2,100 RPM	365 hp (272 kW) @ 2,100 RPM
Power bulge	8% @ 1,900 RPM	8% @ 1,900 RPM	10% @ 1,900 RPM	10% @ 1,900 RPM	10% @ 1,900 RPM
Peak horsepower	300 hp (216 kW)	320 hp (239 kW)	340 hp (254 kW)	370 hp (276 kW)	400 hp (298 kW)
Torque rise	45% @ 1,500 RPM	34% @ 1,500 RPM	29% @ 1,500 RPM	35% @ 1,500 RPM	31% @ 1,500 RPM
Peak torque	945 lb/ft (1,282 N-m)	985 lb/ft (1,335 N-m)	995 lb/ft (1,350 N-m)	1,130 lb/ft (1,532 N-m)	1,199 lb/ft (1,626 N-m)
PTO hp	220 hp	232 hp	248 hp	268 hp	272 hp
FUEL SYSTEM					
Capacity	165 U.S. gal (625 L)				
Filter	Engine mounted w/water separator				
DEF	9 U.S. gal (34 L) / 7 Gal (26.5 L) - usable				
TRANSMISSION					
Powershift transmission	Versatile 16 x 9 transmission (16 forward speeds, 9 reverse)				
Maximum speed	25 mph (40 km/hr)				
AXLES					
Front axle w/limited slip	Standard				
Front axle w/differential lock	Optional				
Front axle - suspended	Optional				
Front axle track setting	60 - 88" (1,524 - 2,235 mm)				
Rear axle diameter	4.1" (105 mm)				
Rear axle track setting (w/120" axle)	92" (2,336.8 mm)				

	275	295	315	335	365
HYDRAULICS					
Advanced hydraulic type	Closed center load sensing system				
Hydraulic flow (standard)	55 gpm (208 L/min)				
High flow system (optional)	72 gpm (273 L/min)				
Hydraulic remotes (standard)	4 remotes				
High flow remotes (optional)	6 remotes				
Maximum system pressure	2,900 PSI (197 bar)				
ELECTRICAL SYSTEM					
Alternator	12V - 200 amps				
Batteries	2-12V, 950 CCA ea.				
Standard lights	Halogen - 2 headlights, 9 working lights available				
LED lighting / Power mirrors	Optional / Optional				
3-POINT HITCH / PTO					
3-point hitch	Category III / IIN			Category III / IVN	
Quick hitch	Optional				
PTO, 540/1000 RPM	Standard			-	
PTO, 1000 RPM	Optional			Standard	
CAB					
Volume	149 cu. ft. (4.22 cu. m)				
Glass	73.5 sq. ft. (6.83 sq. m)				
WEIGHTS & DIMENSIONS					
Weight, unballasted*	23,945 lb (10,861 kg)				
Recommended operating GVW	28,600 lb (12,973 kg)	30,160 lb (13,680 kg)	32,240 lb (14,624 kg)	34,840 lb (15,803 kg)	35,360 lb (16,039 kg)
Wheelbase	124.6" (3,165 mm)			128.95" (3,275 mm)	
Overall length, w/front weights	246" (6,248 mm)			251" (6,375 mm)	
*w/420/90R30 & 480/80R46 singles					

NOTE: Specifications are correct at time of publishing and are subject to change

NEMESIS TRACTORS

MODELS: 175 / 195 / 210

The Versatile Nemesis distills over 50 years of rugged power into a new line of mid-range tractors. Built for everyday work, the tractor is designed to pull heavy implements, perform front end loader applications with

ease and much more. The Nemesis is equipped with premium options and excellent features including the largest cab in the segment with 74.05 sq. ft. (6.87 sq. m) of viewable window glass. Other notable features

include an advanced hydraulic system that is easy to understand and a fully adjustable air suspension seat for superior comfort. The three available horsepower ratings are 175 hp, 195 hp and 210 hp.



THE NEW STANDARD

SUPERIOR VALUE, PERFORMANCE, AND OPERATOR EXPERIENCE



1. CAB

Experience superior comfort, excellent visibility and reduced operator fatigue with the largest cab in the industry (45.2 sq. ft / 4.19 sq. m). The optional suspended axles and semi-active suspended cab help further improve the operator experience.

2. 3-POINT HITCH

The front 3-point hitch can be easily controlled from the comfort of the cab and features a lift capacity of 8,818 lb (4,000 kg). The rear hitch features a lift capacity of 15,543 lb (7,050 kg).

3. FRONT END LOADER

The specially designed loader features a mechanical self-levelling system and soft ride kit to maintain balance and control. A quick detach system also allows the loader to be effortlessly disconnected. Maximum lift capacity of 5,490 lb (2,490 kg) and lift height of 181" (4.6 m).

4. ARMREST CONTROLS

The armrest controls provide smooth and straightforward operation for excellent efficiency. The Multi-Functional Lever is built into the armrest controls and seamlessly incorporates headland management, 3-point hitch control, auto steer engagement and more.

NEMESIS TRACTORS

MODELS: 175 / 195 / 210

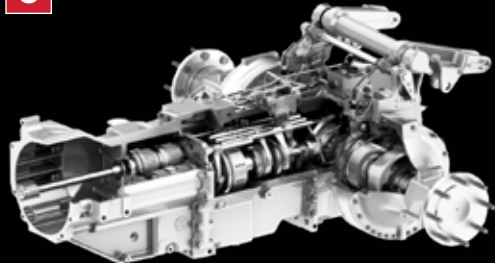
THE NEW STANDARD

SUPERIOR VALUE, PERFORMANCE, AND OPERATOR EXPERIENCE

5



6



7



8



5. CUMMINS ENGINE

The fuel-efficient Stage V compliant Cummins B6.7 L engine offers improved torque and faster throttle response compared to other engines in its class. The Variable Geometry Turbo produces excellent torque response and pulling power.

6. ZF TRANSMISSION

The ZF powershift transmission (30F x 15R) is one of the most reliable transmissions in the industry. The fully electronic transmission (IRS) features full speed matching in powershift and sync gears. Maximum field speed of 25 mph (40 km/hr) with an optional upgrade to 31 mph (50 km/hr).

7. PTO SELECTION

540/1,000 PTO is standard, with a larger 1,000 upgrade available. PTO mode selection is made easy with standard and eco modes. The eco mode limits engine noise, reduces engine RPM and improves fuel efficiency.

8. ADVANCED HYDRAULICS

The tractor is equipped with a standard 31 gpm (120 L/min) pump or optional 42 gpm (160 L/min) high flow pump hydraulic system. The advanced hydraulic system can be easily controlled using the display monitor in the cab or the hydraulic levers.



QUICK TAKEAWAYS

LARGEST CAB IN THE INDUSTRY

The largest cab in the segment provides excellent visibility and reduced operator fatigue with 74.05 sq. ft (6.87 sq.m) of viewable window glass.

UPGRADED COMFORT OPTIONS

Stay comfortable in the field with a fully adjustable air suspension seat, optional leather seating package and semi-active suspended cab.

SIMPLE ARMREST CONTROLS

The logical layout of the armrest controls allow equipment operators to easily navigate the system and operate the tractor.

EXCLUSIVE MULTI-FUNCTIONAL LEVER

Built into the armrest, the Multi-Functional Lever seamlessly incorporates headland management, 3-point hitch control and auto steer engagement.

SPECIALLY DESIGNED LOADER

The front end loader features a soft ride kit and mechanical self-levelling system to help maintain balance and control with a maximum lift capacity of 5,490 lb (2,490 kg).

LEGENDARY CUMMINS ENGINE

The powerful Stage V compliant Cummins B6.7 L engine allows farmers to work until the job is done.

POWERFUL ZF TRANSMISSION

Smoothly shift between gears with a fully electronic ZF TPT20 powershift transmission (30F X 15R). The transmission features full speed matching in powershift and sync gears.

REAR 3-POINT HITCH

The rear hitch features a lift capacity of 15,543 lb (7,050 kg) CAT III / IIIN. The standard hitch can be easily hooked up and controlled from the comfort of the cab or the rear fender.

FRONT 3-POINT HITCH & PTO

The front hitch features a lift capacity of 8,818 lb (4,000 kg) and provides improved versatility to a wide range of attachments.

ENHANCED STORAGE

Staying organized is easy with accessible storage spaces and devices holders located throughout the cab. Additional storage is provided behind the training seat.

NEMESIS TRACTORS SPECIFICATIONS

MODELS: 175 / 195 / 210

	175	195	210
ENGINE			
Engine type	Cummins B6.7 L Stage V		
Aspiration	Turbocharged & air-to-air aftercooled		
Displacement	6.7 L (408 cid)		
PTO horsepower (stationary)*	147 hp	150 hp	157 hp
PTO horsepower (field)*	147 hp	160 hp	172 hp
Horsepower (SAE)	175 hp (131 kW) @ 2,100 RPM	195 hp (145 kW) @ 2,100 RPM	210 hp (157 kW) @ 2,100 RPM
Peak horsepower	195 hp (145 kW) @ 1,900 RPM	215 hp (160 kW) @ 1,900 RPM	220 hp (164 kW) @ 1,900 RPM
Torque rise	34% @ 1,500 RPM	30% @ 1,500 RPM	27% @ 1,500 RPM
Aftertreatment	DOC+SCR+DPF		
FUEL SYSTEM			
Fuel tank capacity	99 U.S. gal (375 L)		
Filter	Engine mounted w/water separator		
DEF tank capacity	9 U.S. gal (35 L)		
TRANSMISSION			
Powershift transmission	ZF TPT20 (30 forward speeds, 15 reverse)		
IRS powershift	Full speed matching in powershift and sync gears (5 syncro, 6 powershifts) (30 forward x 15 reverse)		
Maximum speed	Maximum speed 25 mph (40 km/hr) / optional maximum speed 31 mph (50 km/hr)		
* Manufacturers estimates			

	175	195	210
AXLES			
Front axle w/limited slip	Standard		
Front axle turning angle	55°		
Front axle w/differential lock	Optional		
Front axle - suspended w/differential lock	Optional		
Front axle track setting	61 - 88" (1,549 - 2,235 mm)		
Rear bar axle diameter (standard)	4.1" (105 mm)		
Rear bar axle length (standard)	98" (2,489 mm)		
Rear bar axle length (optional)	118" (2,997 mm)		
Rear axle track setting (optional)	61 - 98" (1,549 - 2,489 mm)		
HYDRAULICS			
Hydraulic type	Closed center load sensing system		
Hydraulic flow (standard)	31 gpm (120 L/min)		
High flow system (optional)	42 gpm (160 L/min)		
Hydraulic remotes (standard)	3 remotes		
High flow remotes (optional)	5 remotes		
Power beyond	Optional		
Maximum system pressure	2,900 PSI (197 bar)		
Trailer brakes	Optional		

NOTE: Specifications are correct at time of publishing and are subject to change

HIGH SPEED DISC

MODELS: FURY HS.250 / HS.300 / HS.350 / HS.400

The Versatile high speed disc is more productive than traditional tillage options. Built for hard work, the Versatile Fury excels at managing difficult residue at higher field speeds of 5 - 12 mph (7.5 - 20 km/hr).

The rugged and heavy-duty frame is built to float front-to-back and side-to-side to help maintain a consistent cutting depth, even in uneven terrain. A true heavyweight, the high speed disc has one of the

highest weight-per-foot ratios on the market, leaving no concerns when tilling hard or heavy soils. Fine tune the machine for any operation with an assortment of blade sizes, blade spacing and rear finishing attachments.

DOMINATE YOUR RESIDUE

ACHIEVE OPTIMUM TILLAGE RESULTS WITH A SINGLE PASS



1. FIELD SPEEDS

The high speed disc tears up residue at 5 - 12 mph (7.5 - 20 km/hr). The higher field speeds ensure the even distribution of residue and eliminates challenges such as uneven or delayed emergence, hair pinning, erosion and planter/hoe-drill plugging.

2. FRAME DESIGN

The frame is the heaviest and most durable in the high speed tillage segment (850 - 1,031 lb/ft). Each blade is protected by four rubber torsion elements that absorb impact and allow the arm to move up/down independently over any field obstacles. Featuring heavy-duty 6-bolt disc bearings that are double roller designed for tillage applications, sealed and maintenance free.

3. TRANSPORT

Transport dimensions are among the best in the industry and result in a highly manoeuvrable machine. Under 12' transport width and 13' 5" transport height makes it easier to move on public roadways and in/out of narrow field access points.

4. FULL FLOATING FRAME

The extremely heavyweight frame ensures disc penetration, even in the hardest of soil conditions. Floating hitch and wings help maintain constant working depth while following ground contours.

HIGH SPEED DISC

MODELS: FURY HS.250 / HS.300 / HS.350 / HS.400

DOMINATE YOUR RESIDUE

ACHIEVE OPTIMUM TILLAGE RESULTS WITH A SINGLE PASS

5



6



7



8



5. REAR ATTACHMENTS

The Fury is customizable with an assortment of rear finishing attachments:

- The standard heavy-duty cage rollers are ideal in primary tillage applications.
- Optional corrugated rubber rollers offer outstanding performance in seedbed preparation.
- Optional spring rollers manage sticky soils while leaving some surface roughness to limit erosion.

6. RADIAL TIRES

The large radial tires are mounted on 10 bolt hubs that provide an extremely wide footprint for maximum flotation in wet conditions. All working widths come complete with four high quality 600/50R22.5IMP Superflot tires.

7. BLADE CHOICE

The 20" notched front blades and plain rear blades are standard. The shallow concave edges offer the latest in micro-alloy boron steel technology and allow the blades to flex rather than crack or break upon impact. Three blade configurations are available: 1. smooth front and rear 2. notched front and smooth rear 3. notched front and rear.

8. DISC ARM SUSPENSION

Each rubber torsion mounted arm is preloaded with four rubber spring elements. The rubber elements compress automatically should an obstacle be encountered. The compression reduces the impact and protects the blade, bearing and frame.

QUICK TAKEAWAYS

DESIGNED FOR HIGH SPEED OPERATION

The high speed disc is more productive than traditional tillage and operates at field speeds of 5 - 12 mph (7.5 - 20 km/hr).

RANGE OF WORKING SPEEDS

What separates the Fury from other high speed tillage options is the wide range of working speeds. Designed for high speed operation, the Fury remains equally as effective at lower field speeds of 5 mph (7.5 km/hr).

EVEN DISTRIBUTION OF RESIDUE

The aggressive disc angle ensures the even distribution of residue and limits challenges such as erosion and uneven or delayed emergence.

OVERSIZED RADIAL TIRES

Experience maximum flotation and minimized compaction in all field conditions with large and optimized radial tires.

HEAVY-DUTY DESIGN

The heaviest frame in the high speed tillage industry helps the Fury better penetrate difficult ground conditions (850+ lb/ft).

FULL-FLOAT FRAME

The entire frame is designed to float front-to-back and side-to-side to maintain consistent cutting depth and uniform field finish in uneven terrain.

SUPERIOR WORKING DEPTH

The Fury comes complete with two rows of blades set at a compound angle that provide top performance between 2.5" and 5" tillage depth.

ENTIRELY CUSTOMIZABLE

The Fury excels at managing residue in a wide assortment of field conditions. Choice of notched or plain disc edge profiles, unique finishing attachments and blade sizes.

INDUSTRY-LEADING TRANSPORT DIMENSIONS

Easily navigate between fields and public roadways with excellent transport dimensions of 12' wide, 13' 5" high (3.65 m wide, 4.08 m high).



HIGH SPEED DISC SPECIFICATIONS

MODELS: FURY HS.250 / HS.300 / HS.350 / HS.400

	HS.250	HS.300	HS.350	HS.400
DIMENSIONS				
Minimum working width	25' 5" (7.7 m)	30' 5" (9.3 m)	35' 5" (10.8 m)	40' 5" (12.3 m)
Width, transport	11' 10" (3.6 m)			
Height, transport	13' 5" (4.1 m)			
Weight per ft. (average over options)	1,031 lb/ft (1,540 kg/m)	947 lb/ft (1,410 kg/m)	895 lb/ft (1,330 kg/m)	854 lb/ft (1,270 kg/m)
Horsepower required (drawbar)	10 - 17 hp/ft (24 - 42 kW/m)			
Working depth	2.5 - 5" (64 - 127 mm)			
Working speed	5 - 12 mph (7.5 - 20 km/hr)			
STRUCTURE				
Frame, main frame	8" x 4" x 0.5" (203 x 102 x 12.7 mm)			
Frame, cross member	6" x 4" x 0.5" (152 x 102 x 12.7 mm)			
Bearings, 20" blades	Hub 30 bearing, double roller maintenance-free bearings, 4 mounting bolts			
Bearings, 22 & 24" blades	Hub 40 bearing, double roller maintenance-free bearings, 6 mounting bolts			
Blade angle	Front blades at 17 degrees with a 20 degree pitch / rear blades at 15 degrees with a 20 degree pitch.			
BLADES				
Blades (standard)	20" x 1/4" (508 x 6.5 mm)			
Blades (optional)	22" x 1/4" (560 x 6.5 mm) 24" x 5/16" (609 x 8 mm)			
Blades, style	All blade sizes available in plain and notched			
FEATURES				
Tires, hitch frame	600/50R22.5IMP Superflot TL			
Tires, wing frame	600/50R22.5IMP Superflot TL			
Depth control	Depth stop segments at hitch cylinders and left hand wing rear cylinder			
FINISHING TOOLS				
Cage rollers with solid bars	24" (609 mm) diameter w/10 1.5" (38 mm) diameter spiral round bars, six sections			
Spring rollers	24" (609 mm) diameter w/ four curved springs mounted in a spiral configuration, six sections			
Rubber rollers	21.3" (541 mm) diameter with rubber semi-pneumatic tire, three sections			

USAGE REFERENCE TABLE

■ IDEAL CONDITIONS
 ■ USE CAUTION
 ■ NOT RECOMMENDED

GANG SETUP	SECONDARY: LIGHT • Field leveling/seedbed prep			SECONDARY: STANDARD • Light stubble cultivation • Spring weed knockdown			PRIMARY: STANDARD • Heavy stubble tillage • Reclaiming wet spots • Field edge cleanup			PRIMARY: MEDIUM • Extreme corn/cane residue • Lighter rocky conditions			PRIMARY: HEAVY • Hayland reclamation • Heavier rocky conditions			COMMERCIAL • Fenceline reclamation • Land breaking • Construction site prep			
	LIGHT SOIL	MED SOIL	HEAVY SOIL	LIGHT SOIL	MED SOIL	HEAVY SOIL	LIGHT SOIL	MED SOIL	HEAVY SOIL	LIGHT SOIL	MED SOIL	HEAVY SOIL	LIGHT SOIL	MED SOIL	HEAVY SOIL	LIGHT SOIL	MED SOIL	HEAVY SOIL	
20" Disc	Green	Green	Green	Green	Green	Green	Green	Green	Green	Green	Green	Green	Yellow	Yellow	Red	Red	Red	Red	Red
22" Disc	Green	Green	Green	Green	Green	Green	Green	Green	Green	Green	Green	Green	Yellow	Red	Red	Red	Red	Red	Red
24" Disc	Yellow	Yellow	Yellow	Green	Green	Green	Green	Green	Green	Yellow	Green	Green	Yellow	Red	Red	Red	Red	Red	Red

NOTE: Specifications are correct at time of publishing and are subject to change

VERTICAL TILLAGE

MODELS: VIKING VT290 / VT320 / VT345 / VT375

The Versatile Viking is designed for fall residue management and spring seedbed preparation. The variable rate vertical tillage tool will cut, chop and size the most difficult residue in the most demanding

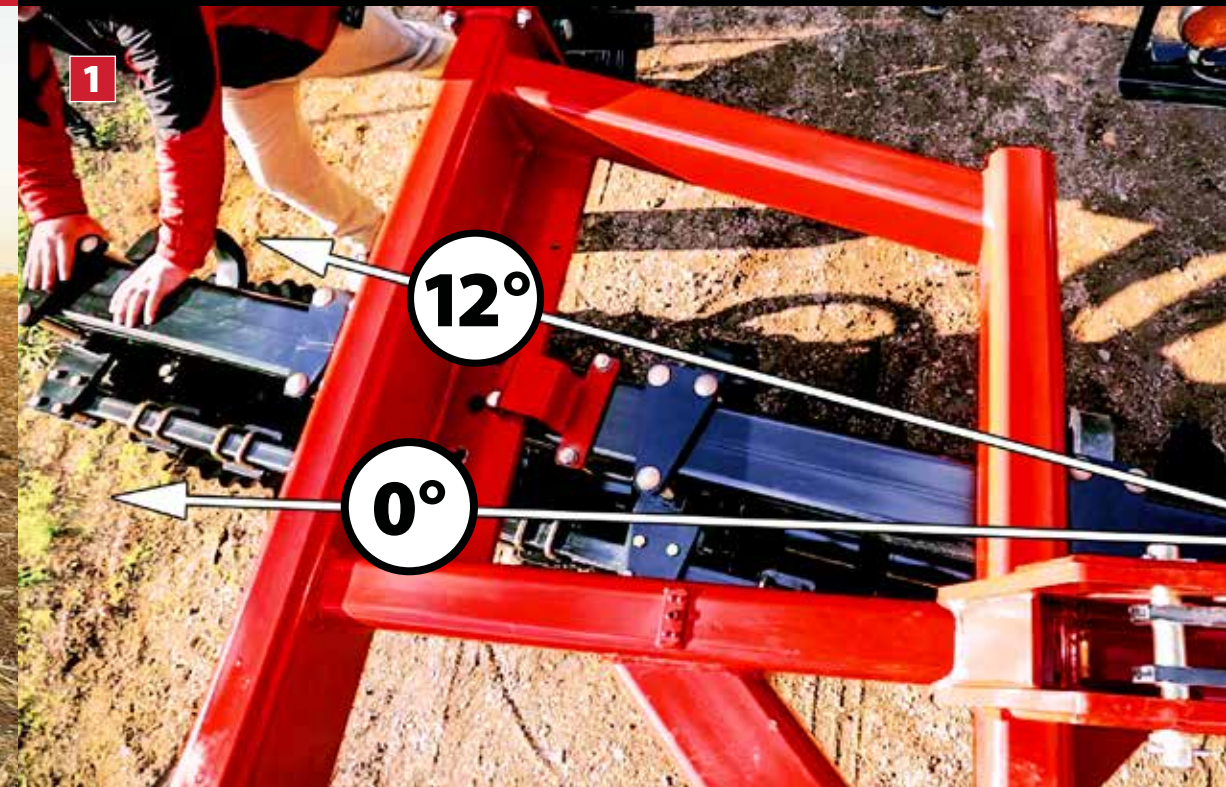
ground conditions, while at the same time mixing the residue into the top 1 - 5" of soil. The weight of the heavy-duty frame (800 lb/ft class) also helps maintain an even and consistent cut in heavy trash and challenging

soil conditions. Customize and configure the tillage to suit any field conditions with a wide assortment of blade spacing, blade sizes, attachments and gang angle adjustments.



ACHIEVE YOUR DESIRED FIELD FINISH

DESIGNED FOR BOTH FALL AND SPRING TILLAGE NEEDS



1. ADJUSTABLE GANG ANGLE

Work through both spring and fall tillage seasons with an adjustable gang angle. The gang angle can be manually or hydraulically adjusted from 0 - 12°, in 4° increments. Use a shallow angle to prepare a seedbed or a more aggressive angle for maximum residue management.

2. ADJUSTABLE WORKING DEPTH

Experience an adjustable working depth of 0 - 5" (0 - 127 mm). Shallow working depths are ideal for small grain crops and allow for faster working speeds. Deeper working depths will move more soil vertically and allow a greater residue mix with the soil.

3. SOILRAZER™ BLADES

The heavy-duty SoilRazer™ VT blades are designed to last longer and maintain their sharp edges throughout the entire 'wear zone' without becoming dull. The blades are 1/4" (6.5 mm) thick.

4. REAR ATTACHMENTS

Choose from a variety of rear attachments:

- The convenient 4x4 mount bar allows for the installation of almost any finishing attachment.
- 12" diameter flat bar rolling baskets help fix residue into the soil and leave a firm and even finish.
- Mounted harrows smooth out the soil and spread heavy amounts of residue behind the machine.

VERTICAL TILLAGE

MODELS: VIKING VT290 / VT320 / VT345 / VT375

ACHIEVE YOUR DESIRED FIELD FINISH

DESIGNED FOR BOTH FALL AND SPRING TILLAGE NEEDS



5



8

5. HYDRAULIC LEVELING

Hydraulic gang angle adjustments are made quick and simple with the Viking. The self-levelling hitch with hydraulic control allows the operator to easily level the implement from front-to-rear (adjust over a range of 18°).

6. CHOICE OF BLADE SPACING

Choose the right blade spacing to best match specific field conditions:

- The 8" blade spacing provides a shallower working depth with less residue.
- The 9" blade spacing provides a deeper working depth when more residue is present.

7. STONE-FLEX BEARINGS

The stone-flex bearing hangers are perfect for absorbing shock loads and reacting to both vertical and horizontal forces. The gang-style vertical tillage encourages each blade to cut, penetrate and continue rolling through tough residue.

8. HEAVY-DUTY DESIGN

The heavy weight (800 lb/ft) helps keep the machine cutting evenly and consistently through heavy trash conditions. The industry-leading design helps ensure optimal working depth can be achieved.



6



7



QUICK TAKEAWAYS

SEASONAL TILLAGE

Designed for fall residue management and spring seedbed preparation:

- **SPRING:** Use a shallow angle to lightly till the soil and prepare a seedbed. The opened soil surface lets in airflow, which allows excess moisture to escape and aids in warming the seedbed to promote rapid emergence.
- **FALL:** Use a more aggressive angle for maximum residue management in the fall. The Viking can be used ahead of or in place of primary tillage and clean up field edges, low spots and ruts.

STRONG & TOUGH SOILRAZOR™ VT BLADES

Aggressive SoilRazor disc blades are designed for chopping trash at high speeds with minimal soil disturbance (1/4" thick). The shallow concavity sawtooth blades capture and cut the toughest residue.

HEAVY-DUTY FRAME

Built to work, the heavy weight helps keep the machine cutting evenly and consistently through heavy trash conditions (800 lb/ft class).

STONE-FLEX BEARINGS

The gang-style vertical tillage encourages each blade to continue rolling through tough residue where individually mounted blades would skid or plug. Stone-flex bearing hangers absorb shock loads at the higher working speeds and react to both vertical and horizontal forces.

ADJUSTABLE GANG ANGLE (0 - 12°)

The adjustable gang angle completes the work that traditional vertical tillage machines cannot. Adjustable working depths from 0-5" handle heavy trash and provide a smooth seedbed in various soil, crop and residue conditions.

CUSTOMIZED TILLAGE

Farmers can find what works for their operation with various available blade spacings, blade sizes, adjustable gang angles and selection of finishing tools.

VERTICAL TILLAGE SPECIFICATIONS

MODELS: VIKING VT290 / VT320 / VT345 / VT375

	VT290 (8" SPACING)	VT290 (9" SPACING)	VT320 (8" SPACING)	VT320 (9" SPACING)	VT345 (8" SPACING)	VT345 (9" SPACING)	VT375 (8" SPACING)	VT375 (9" SPACING)
DIMENSIONS								
Width, working	28' 10" (8.8m)	28' 10" (8.8m)	31' 7" (9.6m)	32' (9.8m)	34' 2" (10.4m)	35' 2" (10.7m)	36' 11" (11.3m)	38' 4" (11.7m)
Width, transport	17' 3" (5.3m)	17' 3" (5.3m)	17' 3" (5.3m)	17' 3" (5.3m)	17' 7" (5.4m)	17' 10" (5.4m)	17' 7" (5.4m)	17' 10" (5.4m)
Height, transport	13' 8" (4.2m)	13' 8" (4.2m)	14' 6" (4.4m)	14' 6" (4.4m)	14' 8" (4.5m)	15' (4.6m)	16' (4.9m)	16' 3" (5.0m)
Weight class	800 lb/ft class (1,190 kg/m)							
Horsepower required (drawbar)	8 - 12 hp/ft (20 - 29 kW/m)							
Working depth	0 - 5" (0 - 127 mm)							
Working speed	7 - 10 mph (11 - 16 km/hr)							
STRUCTURE								
Frame, main frame	8" x 4" x 0.5" (203 x 102 x 12.7 mm)							
Frame, cross member	6" x 4" x 0.5" (152 x 102 x 12.7 mm)							
Bearings	T2-215 extreme duty series							
Gang angle, adjustable	0°, 4°, 8°, 12°							
Gang shaft	1 15/16" (49 mm) high carbon steel							
Gang shaft, factory torqued	3,200 ft/lb (4,339 N-m)							
BLADES								
Blades, standard	22" x 1/4" (508 x 6.5 mm) SoilRazor™							
Blades, optional	24" x 1/4" (560 x 6.5 mm) SoilRazor™							
FEATURES								
Tires, main frame	FS24 380/55R16.5 radial tires (290 and 320 models) FS24 440/55R18 radial tires (345 and 375 models)							
Tires, wing frame	12.5L x 15 implement tires							
Depth control	3-cylinder series system c/w depth stop segments Optional single point hydraulic depth control							
FINISHING TOOLS								
Rolling baskets	12" (305 mm) diameter w/8-spiral flat bars							
Tine harrows	3-bar mounted, 3/8 x 18" tines							
4x4 tool mounting bar	Allows for any finishing attachment							
* Working width measured up to the furrow filler blade at 8 degrees of gang angle.								

USAGE REFERENCE TABLE

■ IDEAL CONDITIONS
 ■ USE CAUTION
 ■ NOT RECOMMENDED

GANG SETUP	SECONDARY: LIGHT • Field leveling/seedbed prep			SECONDARY: STANDARD • Light stubble cultivation • Spring weed knockdown			PRIMARY: STANDARD • Heavy stubble tillage • Reclaiming wet spots • Field edge cleanup			PRIMARY: MEDIUM • Extreme corn/cane residue • Lighter rocky conditions			PRIMARY: HEAVY • Hayland reclamation • Heavier rocky conditions			COMMERCIAL • Fenceline reclamation • Land breaking • Construction site prep		
	LIGHT SOIL	MED SOIL	HEAVY SOIL	LIGHT SOIL	MED SOIL	HEAVY SOIL	LIGHT SOIL	MED SOIL	HEAVY SOIL	LIGHT SOIL	MED SOIL	HEAVY SOIL	LIGHT SOIL	MED SOIL	HEAVY SOIL	LIGHT SOIL	MED SOIL	HEAVY SOIL
Angle - 0°	Yellow	Yellow	Yellow	Green	Green	Green	Green	Green	Green	Green	Green	Yellow	Red	Red	Red	Red	Red	Red
Angle - 4°	Yellow	Yellow	Yellow	Green	Green	Green	Green	Green	Green	Green	Green	Yellow	Red	Red	Red	Red	Red	Red
Angle - 8°	Green	Green	Green	Green	Green	Green	Green	Green	Yellow	Yellow	Yellow	Yellow	Red	Red	Red	Red	Red	Red
Angle - 12°	Green	Green	Green	Green	Green	Green	Yellow	Yellow	Yellow	Yellow	Yellow	Yellow	Red	Red	Red	Red	Red	Red

NOTE: Specifications are correct at time of publishing and are subject to change

TANDEM DISC

MODELS: TD400 / TD500N / TD500 / TD600N / TD600 / TD700

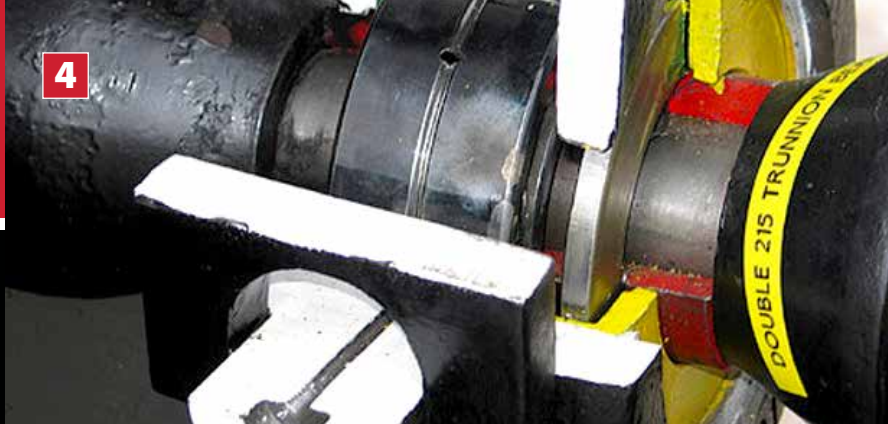
Versatile tillage can handle the heaviest soils and most extreme crop residue. The Versatile tandem disc is one of the industry's most durable machines with extreme-duty bearings, interlocking half spools and 3,200 lb/

ft of gang bolt torque. The robust frame design and strong gang bearing options ensure that farmers can stay working in the field until the job is done. Farmers can take comfort in the straightforward, durable and

easily maintained design of the tandem discs. The wide selection of models and sizes means that the right tandem disc is available for light, medium and heavy primary tillage needs.

TILLAGE THAT CAN DO IT ALL

BUILT TO HANDLE TRASH AND INCORPORATE HEAVY RESIDUE



1. HYDRAULIC OPTIONS

Easy to use Single-Point Depth Control and Hydraulic Hitch Angle Adjustments are available. The options allow the operator to quickly and conveniently fine tune the tandem disc to match different tillage conditions.

2. GANG TECHNOLOGY

The tightest gang torque in the industry at 3,200 lb/ft. One of the largest diameter gang bolts ensures a strong, reliable and durable disc gang. Stone-flex bearing hangers improve the disc's working life by reducing the impact on the gang bearings.

3. CHOICE OF MODELS

- Wide range of working width and weight class options:
- The TD400 is ideal for small tillage jobs.
 - The TD500N/TD500 provides excellent secondary tillage performance.
 - The TD600N/TD600 excels in both light primary and spring secondary tillage.
 - The heavy-duty TD700 has the strength needed for primary tillage needs.

4. GANG BEARINGS

The extreme-duty T2-215 bearings offer the highest load rating in the industry. Pivot points keep the trunnions centred and able to handle gang shaft deflection. Housing design makes it easy to remove individual gang assemblies by simply removing one bolt per bearing hanger.

TANDEM DISC

MODELS: TD400 / TD500N / TD500 / TD600N / TD600 / TD700

TILLAGE THAT CAN DO IT ALL

BUILT TO HANDLE TRASH AND INCORPORATE HEAVY RESIDUE

8



QUICK TAKEAWAYS

CHOICE OF MODELS

Find the right tillage with Versatile. This selection of models and sizes means that the right machine is available for any job.

- **LIGHT PRIMARY TILLAGE:** Improve overall seedbed quality with specially designed secondary and light primary tillage machines.
- **MEDIUM PRIMARY TILLAGE:** All-purpose tandem discs can manage heavy crop residue or work up old pastures, slough bottoms and newly cleared land.
- **HEAVY PRIMARY TILLAGE:** Built to work down pastures and manage heavy crop residues such as corn, small grains stubble, potatoes or sugar beets.

SIMPLICITY REMAINS KEY

Tillage operators can take comfort in the straightforward, durable and easily maintained design of Versatile tandem discs.

DESIRED FIELD FINISH

The floating hitch and extremely durable disc gang assemblies help achieve an ideal field finish in various conditions.

BLADES THAT ARE BUILT TO LAST

The boron alloy steel blades provide the flexibility necessary to not split, crack or break from impact force while providing the edge hardness to last in abrasive soils.

HEAVY-DUTY COMPONENT

The extreme-duty bearings, interlocking half-spools, fabricated steel spools and 3,200 lb/ft of gang bolt torque help create one of the industry's most heavy-duty machines.

DURABLE BEARING HANGERS

Stone-flex bearing hangers absorb shock loads and react to both vertical and horizontal forces. The bearing hangers come standard across the product line and improve the disc's working life by reducing the impact on gang bearings.

5



5. STAGGERED FRONT GANGS

Overlapping front gangs are standard and ensure that all soil at the center of the disc is cut cleanly and evenly. Besides leaving a more level soil profile, this feature eliminates the need for a center shank or bulk buster usually supplied on most conventional tandem discs.

6. BLADE SCRAPERS

Versatile tandem discs feature a one-piece blade scraper made of carbon steel for longer wear life (4" wide). The scrapers are located high end to the inside of the blade for maximum trash flow and to reduce draft requirements, eliminating the need for trash guards.

7. STONE-FLEX BEARING HANGERS

The stone-flex bearings help improve the disc's working life by reducing the impact of gang bearings. Eliminates springs or pivot points that will wear out or require daily maintenance. The following provides consistent down pressure to maintain a steady depth of cut. An upgraded widepan style scraper is available on most models.

8. INTERLOCKING HALF SPOOLS

Interlocking half spools at the disc bearings are optional on machines using the T2-215 bearings. The interlocking teeth built into the spools effectively provide 527% more surface area to grip against the blades so the gang assemblies won't come loose over time.

6



7



TANDEM DISC SPECIFICATIONS

MODELS: TD400 / TD500N / TD500 / TD600N / TD600 / TD700

	TD400		TD500N	TD500	
FIELD OPERATION					
Main season of use	Spring seedbed preparation		Spring seedbed preparation		
Accessories - harrow	-		3-bar, standard duty tine harrow		
Accessories-basket	-		-		
DIMENSIONS					
Blade spacing	8" (203 mm)	9" (230 mm)	9" (230 mm)	8" (203 mm)	9" (230 mm)
Width, working*	11' 6", 14' 6", 16', 18' 6", 20' (3.5 - 6.0 m)	11' 6", 14' 6", 16' 6", 18', 19' 6" (3.5 - 5.9 m)	18', 23', 26' 6" (5.5 - 8.1 m)	28' 0", 32', 25' 6", 38', 40.5' (8.5 - 12.3 m)	29' 6", 32' 6", 35' 6", 38' 6", 40.0' (9.0 - 12.2 m)
Width, transport	13' - 21' 6" (4 - 6.6 m)		12' (3.7 m)	18' (5.5 m)	
Height, transport§	-		10' - 13' 7" (3.0 - 4.1 m)	12' 4" - 18' 1" (3.76 - 5.5 m)	
Weight*	350 lb/ft (521 kg/m)		450 lb/ft (671 kg/m)		
Horsepower required (drawbar)*	4.5 - 6.0 hp/ft (11 - 15 kW/m)†	5.0 - 7.0 hp/ft (12 - 17 kW/m)†	5.0 - 7.0 hp/ft (12 - 17 kW/m)†	4.5 - 6.0 hp/ft (11 - 15 kW/m)†	5.0 - 7.0 hp/ft (12 - 17 kW/m)†
STRUCTURE					
Frame	Welded, 4" x 4" (102 x 102 mm) tubular steel frame				
Gang beam size	-		-		
Gang bearings, standard	211 WSS series		410 WSS series c/w triple lip seal		
Gang bearings, optional	-		-		
Gang angle	20° / 21° / 22° / 23° front and rear		20° front; 17° rear		
Gang shaft	1 15/16" (49 mm) high carbon steel, torqued to 3,200 lb/ft (4,340 Nm)				
BLADES					
Blade styles available	All blade sizes available in Plain (P) and Notched (N) options				
Blade size, standard	22" x 1/4" (560 x 6.5 mm) (P)				
Blade size(s), optional	22" x 9/32" (560 x 7 mm) (N)	1) 22" x 9/32" (560 x 7 mm) (N) 2) 24" x 9/32" (610 x 7 mm) (P) 3) 24" x 5/16" (610 x 8 mm) (P,N)	1) 22" x 9/32" (560 x 7 mm) (N) 2) 24" x 9/32" (610 x 7 mm) (P) 3) 24" x 5/16" (610 x 8 mm) (P,N)	22" x 9/32" (560 x 7 mm) (N)	1) 22" x 9/32" (560 x 7 mm) (N) 2) 24" x 9/32" (610 x 7 mm) (P) 3) 24" x 5/16" (610 x 8 mm) (P,N)
FEATURES					
Tires, main frame	(2) 11L x 15 FI (11.5' - 14.5' sizes) (4) 11L x 15 FI (16'+ sizes)		(4) 11L x 15 FI	(4) 11L x 15 FI (28' - 32' units) (4) 12.5L x 15 FI LR (F) (35'+ units)	
Tires, wing frame	-		(2) 11L x 15 FI	(4) 11L x 15 FI	
Depth control	Single cylinder system C/W Depth stop segments		3-cylinder series system c/w depth stop segments		
Hitch	Adjustable		Auto-leveling, full floating hitch, optional hydraulic hitch leveling		
* w/24" blades † Depends on working depth, soil type, field speed, etc. § Always confirm heights with all accessories attached.					

	TD600	TD600N		TD700	
FIELD OPERATION					
Main season of use	Fall medium tillage, spring seedbed preparation			Fall heavy tillage	
Accessories - harrow	3-bar, standard duty tine harrow				
Accessories-basket	12" diam., flat bar rolling basket	-			
DIMENSIONS					
Blade spacing	10.5" (267 mm)	9" (230 mm)	10.5" (267 mm)	10.5" (267 mm)	12" (305 mm)
Working width*	25', 29', 32', 35' 6" (7.6 - 10.8 m)	15' 11", 18' 10", 21' 10", 23' 3" (4.9 - 7.1 m)	16' 4", 18' 10", 21' 6", 23' 3" (5.0 - 7.1 m)	25', 26' 6", 29', 32', 35' 6", 38' 6" (7.6 - 11.7 m)	24', 26', 28' 6", 30' 6", 32' 6", 36', 38' 6" (7.3 - 11.7 m)
Transport width	17' 6" (4.4 m)	9' 6" (2.9 m)		17' 6" (4.4 m)	
Transport height§	11' 6" - 15' 11" (3.5 - 4.9 m)	12' 1" - 15' 8" (3.7 - 4.7 m)		10' 9" - 17' 5" (3.3 - 5.3 m)	
Weight*	600 lb/ft (892 kg/m)	650 lb/ft (970 kg/m)	550 lb/ft (820 kg/m)	700 lb/ft (1,042 kg/m)	
Horsepower required (drawbar)*	6 - 8 hp/ft (15 - 20 kW/m)†				7 - 9 hp/ft (17 - 22 kW/m)†
STRUCTURE					
Frame	Welded, 6" x 4" (152 x 102 mm) tubular steel frame	Welded, 4" x 4" (102 x 102 mm) and 6" x 4" (152 x 102 mm) tubular steel frame		Welded, 8" x 4" (203 x 102 mm) tubular steel frame	
Gang beam size	-		6" x 4" x 3/8" (152 x 102 x 9 mm)		
Gang bearings, standard	410 WSS series c/w triple lip seal			T2-215 series trunnion mounted	
Gang bearings, optional	T2-215 series trunnion mounted		-	T2-215 series trunnion mounted	-
Gang angle	20° front; 17° rear		23° / 20° / 17° front; 20° / 17° / 14° rear		21° front; 19° rear
Gang shaft	1-15/16" (49 mm) high carbon steel, torqued to 3,200 lb/ft (4,340 Nm)				
BLADES					
Blade styles available	All blade sizes available in Plain (P) and Notched (N) options				
Blade size, standard	26" x 5/16" (660 x 8 mm) (P)	24" x 5/16" (610 x 8 mm) (P)	26" x 5/16" (660 x 8 mm)	26" x 5/16" (660 x 8 mm) (P)	28" x 3/8" (711 x 9 mm) (P)
Blade size(s), optional	26" x 5/16" (660 x 8 mm) (N) 26" x 3/8" (660 x 9 mm) (P,N)	24" x 5/16" (610 x 8 mm) (N) 26" x 5/16" (660 x 8 mm) (P,N)	26" x 5/16" (660 x 8 mm) (N)	26" x 5/16" (660 x 8 mm) (N) 26" x 3/8" (660 x 9 mm) (P,N) 28" x 3/8" (711 x 9 mm) (P,N)	28" x 3/8" (711 x 9 mm) (N)
FEATURES					
Tires, main frame	(4) 12.5L x 15 FI (4) FS24-380/55R16.5 - optional		(2) FS24-380/55R16.5 (16' and 19' units) (2) FS24-440/55R18 (21' and 23' units)		(4) FS24 380/55R16.5
Tires, wing frame	(4) 12.5L x 15 FI (4) FS24-380/55R16.5 - optional		-		(4) 12.5L x 15 FI (4) FS24-380/55R16.5 - optional
Depth control	3-cylinder series system c/w depth stop segments Optional hydraulic single point depth control		Single cylinder system C/W depth stop segments		3-cylinder series system c/w depth stop segments Optional hydraulic single point depth control
Hitch	Auto-leveling, full floating hitch, optional hydraulic hitch leveling				
* w/24" blades † Depends on working depth, soil type, field speed, etc. § Always confirm heights with all accessories attached.					

NOTE: Specification are correct at time of publishing and are subject to change

OFFSET DISC

MODELS: SD550 / SD650

Versatile tillage is built to be stronger and last longer than the competition. The offset discs meet the needs of the most demanding agricultural jobs with available weight classes ranging from 550 - 650 lb/ft. The rugged

design features extreme-duty bearings, optional interlocking half spools and the industry's strongest gangs torqued to an impressive 3,200 lb/ft. Versatile offset discs offer more than the 'one size fits all' approach

found among some competitors. Farmers can pick and choose from an assortment of working widths, blade spacings, disc sizes and weight classes that best suits their specific field needs.

DESIGNED AND BUILT FOR WORK

MILLIONS OF ACRES AND EIGHT DECADES OF GROUNDBREAKING EXPERTISE



1. FRAME DESIGN

The rugged tillage design meets the needs of the most demanding jobs. The increased weight of the frame enables the discs to penetrate the ground and provide optimal results (565 - 650 lb/ft).

2. GANG TECHNOLOGY

The extreme-duty T2-215 bearings offer the highest load rating in the industry. Designed for the most demanding working conditions, the offset discs also feature the tightest torque in the industry (3,200 lb/ft).

3. MODELS AND OPTIONS

Versatile offset discs offer more than the 'one size fits all' approach found among some competitors. Farmers have the opportunity to select the size, working width, weight class and blade spacing that best suits their specific field needs.

4. ADJUSTABLE GANG ANGLE

Farmers can achieve their desired results and change the angle of cut between three different positions. This causes the disc to cut with more or less aggressive discing action. The reduced gang angle is ideal when operating in lighter residue conditions and the increased angle when operating in more aggressive heavy residue soils.

OFFSET DISC

MODELS: SD550 / SD650

DESIGNED AND BUILT FOR WORK

MILLIONS OF ACRES AND EIGHT DECADES OF GROUNDBREAKING EXPERTISE



5. BLADE TECHNOLOGY

All Versatile offset discs feature the latest in micro-alloy boron steel technology. The disc blades combine the critical performance characteristics of superior breakage with long-wearing abrasion-resistant hardness.

6. HYDRAULIC UPGRADE

Optional hydraulic upgrades include Single Point Depth Control and Hydraulic Hitch Angle Adjustments. These upgrades allow depth setting and hitch angle corrections to be made in seconds with minimal effort.

7. BLADE SCRAPERS

All Versatile offset discs feature a 4" wide blade scraper made of carbon steel for long wear life. The scrapers are U-bolt mounted for maximum adjustment on a heavy-duty tubular steel bar.

8. STEEL FABRICATED SPOOLS

Versatile discs feature fabricated steel half and full spools. Unlike cast-iron spools, steel spools can withstand far greater "shock loads" from rocks or stumps, thereby eliminating spool breakage. The fabricated spools ensure the gangs will not shift and become loose.

QUICK TAKEAWAYS

HEAVY-DUTY DESIGN

The rugged tillage design meets the needs of the most demanding agricultural, commercial and construction jobs. The weight of the frame makes sure that the discs can penetrate the ground and provide optimal results (565 - 650 lb/ft).

ADJUSTABLE GANG ANGLE

Farmers can achieve their desired results and change the angle of cut between three different positions.

CUSTOMIZABLE TILLAGE

Versatile offset discs offer more than the 'one size fits all' approach found among some competitors. Choose from a variety of size, working width, weight class and blade spacing.

POWERFUL GANG TECHNOLOGY

The extreme-duty T2-215 bearings offer the highest load rating in the industry. The offset discs also feature the tightest torque in the industry (3,200 lb/ft).

THE LATEST BLADE TECHNOLOGY

All Versatile discs feature the latest in micro-alloy boron steel technology because quality disc implements start with quality blades.

STRONG STONE-FLEX HANGERS

The stone-flex hangers provide additional tillage protection. The bearing hangers improve the disc's working life and provide further protection from impact force by enabling the gang assembly to move slightly in any direction.

CONVENIENT PAN-STYLE SCRAPERS

The optional pan-style scrapers provide more effective cleaning and prevent sticky soil from building up. As a result, the blades cut cleaner and the draft is lighter.

OFFSET DISC SPECIFICATIONS

MODELS: SD550 / SD650

	SD550	SD650
DIMENSIONS		
Blade spacing	10.5" (267 mm)	10.5" (267 mm) / 12" (305 mm)
Width, working	10', 12', 14', 15', 16', 18', 20' (3.0 - 6.1 m)	10', 12', 14', 15', 16', 18', 20' (3.0 - 6.1 m)
Width, transport	2' 6" (762 mm) wider than working width	
Weight / ft †	565+ lb/ft (841 kg/m)	603+ lb/ft (897 kg/m)
Weight / blade †	266 lb/disc (121 kg)	297 lb/disc (135 kg) / 340 lb/disc (154 kg)
Horsepower required (drawbar)*	7 - 9 hp/ft (17 - 22 kW/m)	8 - 10 hp/ft (19.5 - 25 kW/m)
STRUCTURE		
Frame	6" x 4" x 3/8" (152 x 102 x 9 mm)	8" x 4" x 3/8" (203 x 102 x 9 mm)
Hitch	96" (2.4 m) long, automatic self-leveling Optional hydraulic hitch leveling	
Gang beam size	6" x 4" x 3/8" (152 x 102 x 9 mm)	
Gang bearings, standard	410 WSS series	T2-215 extreme duty series
Gang bearings, optional	T2-215 extreme duty series	
Gang angle	25° / 22° / 19° front and rear	
Gang shaft	1 15/16" (49 mm)	
Gang hanger	Stone-flex, 1 1/4" x 2 1/2" (32 x 64 mm)	
Spool size (steel fabricated)	6" (152 mm) diameter Optional interlocking half spools	10.5" option 7" (178 mm) diameter Optional interlocking half spools 12" option 7" (178 mm) diameter Standard interlocking half spools
BLADES		
Blade styles available	All blade sizes available in Plain (P) and Notched (N) options	
Blade size, standard	24" x 5/16" (610 x 8 mm) (N)	26" x 5/16" (660 x 8 mm) (N) / 28" x 3/8" (711 x 9 mm) (N)
Blade size(s), optional	26" x 5/16" (660 x 8 mm) (N,P) 26" x 3/8" (660 x 9 mm) (N,P)	26" x 5/16" (660 x 8 mm) (P) 26" x 3/8" (660 x 9 mm) (N,P) 28" x 3/8" (711 x 9 mm) (P) 30" x 3/8" (762 x 9 mm) (N,P)
BLADES		
Scrapers	Adjustable rigid scrapers Optional bearing trash guards Optional bearing wear plates	Wide-pan, mouldboard style, heavy-duty Optional bearing trash guards Optional bearing wear plates
Tires	(4) 11L x 15 FL LR 'D'	
Depth control	Single 4" x 12" (102 x 305 mm) hydraulic cylinder c/w depth control segments Optional single point hydraulic depth control	
† Based on standard disc option * Depends on working depth, soil type, field speed, etc.		

OFFSET DISC

USAGE REFERENCE TABLE

■ IDEAL CONDITIONS ■ USE CAUTION ■ NOT RECOMMENDED

MODEL	GANG SETUP	SECONDARY: LIGHT • Field leveling/seedbed prep			SECONDARY: STANDARD • Light stubble cultivation • Spring weed knockdown			PRIMARY: STANDARD • Heavy stubble tillage • Reclaiming wet spots • Field edge cleanup			PRIMARY: MEDIUM • Extreme corn/cane residue • Lighter rocky conditions			PRIMARY: HEAVY • Hayland reclamation • Heavier rocky conditions			COMMERCIAL • Fenceline reclamation • Land breaking • Construction site prep			
		LIGHT SOIL	MED SOIL	HEAVY SOIL	LIGHT SOIL	MED SOIL	HEAVY SOIL	LIGHT SOIL	MED SOIL	HEAVY SOIL	LIGHT SOIL	MED SOIL	HEAVY SOIL	LIGHT SOIL	MED SOIL	HEAVY SOIL	LIGHT SOIL	MED SOIL	HEAVY SOIL	
TD400	Plain Disc	■	■	■	■	■	■	■	■	■	■	■	■	■	■	■	■	■	■	■
TD500N/500	Plain Disc	■	■	■	■	■	■	■	■	■	■	■	■	■	■	■	■	■	■	■
TD600N/600	Plain Disc	■	■	■	■	■	■	■	■	■	■	■	■	■	■	■	■	■	■	■
TD700	Plain Disc	■	■	■	■	■	■	■	■	■	■	■	■	■	■	■	■	■	■	■

TANDEM DISC

USAGE REFERENCE TABLE

■ IDEAL CONDITIONS ■ USE CAUTION ■ NOT RECOMMENDED

MODEL	GANG SETUP	SECONDARY: LIGHT • Field leveling/seedbed prep			SECONDARY: STANDARD • Light stubble cultivation • Spring weed knockdown			PRIMARY: STANDARD • Heavy stubble tillage • Reclaiming wet spots • Field edge cleanup			PRIMARY: MEDIUM • Extreme corn/cane residue • Lighter rocky conditions			PRIMARY: HEAVY • Hayland reclamation • Heavier rocky conditions			COMMERCIAL • Fenceline reclamation • Land breaking • Construction site prep			
		LIGHT SOIL	MED SOIL	HEAVY SOIL	LIGHT SOIL	MED SOIL	HEAVY SOIL	LIGHT SOIL	MED SOIL	HEAVY SOIL	LIGHT SOIL	MED SOIL	HEAVY SOIL	LIGHT SOIL	MED SOIL	HEAVY SOIL	LIGHT SOIL	MED SOIL	HEAVY SOIL	
SD550	Plain Disc	■	■	■	■	■	■	■	■	■	■	■	■	■	■	■	■	■	■	■
SD650	Plain Disc	■	■	■	■	■	■	■	■	■	■	■	■	■	■	■	■	■	■	■

NOTE: Specifications are correct at time of publishing and are subject to change



VERSATILE

©2020 Buhler Versatile Inc. All Rights Reserved
info@versatile-ag.com
versatile-ag.com
Ref: 102020
Edition: 1

Illustrations, photographs and specifications in this brochure are based on the latest information at the time of publication. Design and specification are subject to change without notice; please contact your local dealer for product information and availability.

“Versatile”, the Versatile logo and all other Versatile related marks, images and symbols are the exclusive property and/or trademarks of Buhler Versatile Inc.